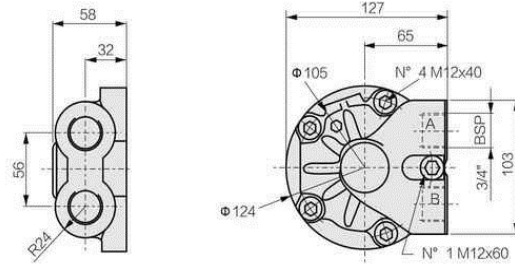


液压马达配流器 Hydraulic motors distributors



D31

D31配油盘, 油孔为G3/4"
D31 distributor with 3/4" ports.



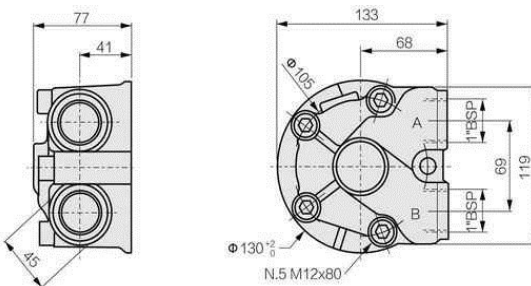
D310

与D31相同, 油口为G1"
重量: 4kg
Is the same as D31, oil port is G1"
Weight: 4kg

D40

标准配置用配油盘。
重量: 5kg

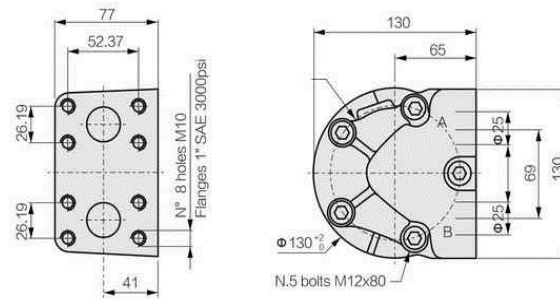
Standard distributor for motors.
Weight: 5kg



D47

油孔为φ25的法兰连接配油盘。
重量: 6kg

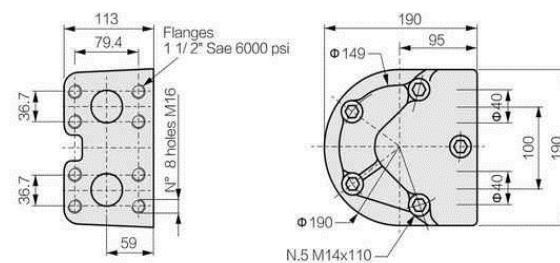
Distributor with SAE 1" 3000 psi flanges.
Weight: 6kg



D90

GM6, NHM31 系列标准配油盘。
重量: 14.5kg

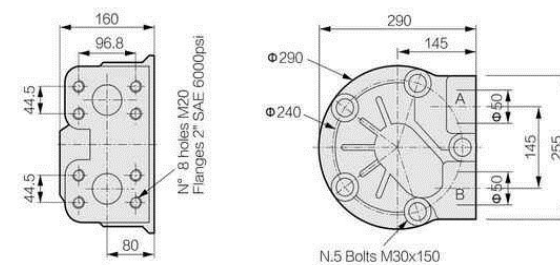
Standard distributor for GM6, NHM31 series motors.
Weight: 14.5kg



D250

大流量配油盘
重量: 50kg

High flow distributor
Weight: 50kg



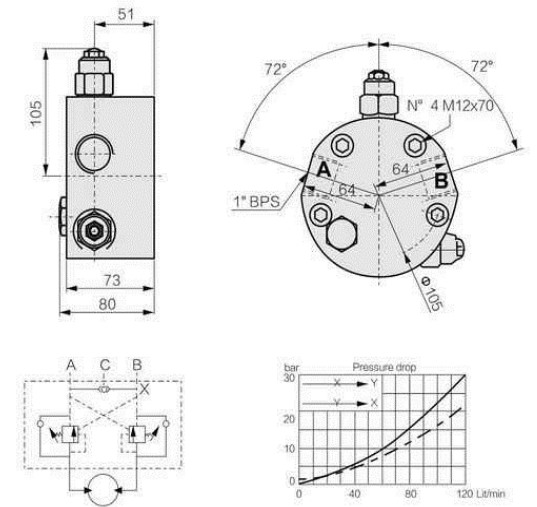
集成式液压配流器 Distributors with integration valve block



D503

带有双向平衡阀和高压梭阀 (C) 的配油盘
最大流量120 lit/min
调节比 10: 1
最大压力 265 bar
压力设定=1.3x工作压力
压力设定范围从100bar 到350bar
B口背压可能对阀的作用产生不利影响
重量: 5kg

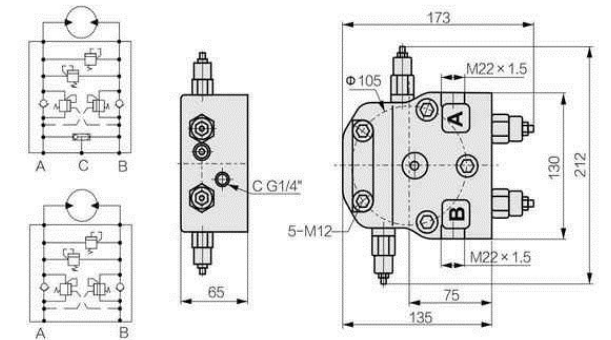
Distributor with double overcentre valve and high pressure pilot line(C)
Max flow 120 lit/min
Pilot ratio 10:1
Max pressure 265 bar.
Pressure setting=1.3x working pressure.
Press.Setting range 100 to 350 bar
Back-pressure in port B may adversely affect operation of the valve
Weight: 5kg



D60221

双向过载阀, 双向平衡阀
高压梭阀
最高设定压力35MPa
最大流量为60L/min

Bidirectional overload valve
Bidirectional counterbalance valve
High pressure shuttle valve
Maximum setting pressure is 35MPa
Maximum flow is 60L/min



D6022

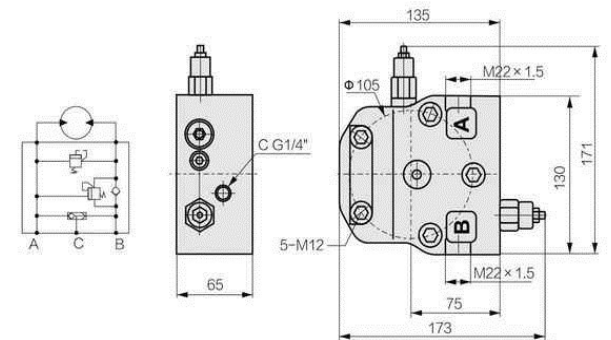
带双向过载阀, 双向平衡阀
最高设定压力35MPa
最大流量为60L/min

Bidirectional overload valve
Bidirectional counterbalance valve
Maximum setting pressure is 35MPa
Maximum flow is 60L/min

D60111

单向过载阀、单向平衡阀
高压梭阀
最高设定压力35MPa
最大流量为60L/min

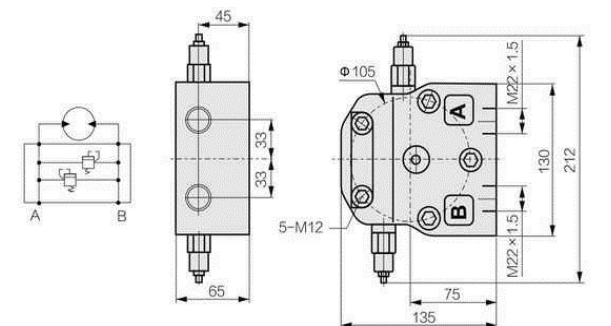
Single overload valve
Single counterbalance valve
High pressure shuttle valve
Maximum setting pressure is 35MPa
Maximum flow is 60L/min



D6002

双向过载阀
最高设定压力35MPa
最大流量为60L/min

Bidirectional overload valve
Maximum setting pressure is 35MPa
Maximum flow is 60L/min



集成式液压配流器

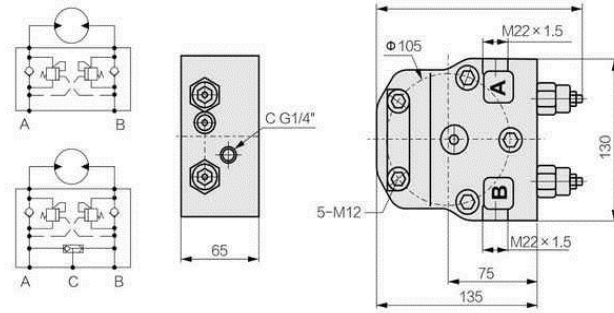
Distributors with integration valve block

Jinghan

D602

双向平衡阀
最高设定压力35MPa
最大流量为60L/min

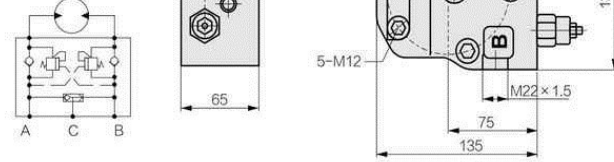
Bidirectional counterbalance valve
Maximum setting pressure is 35MPa
Maximum flow is 60L/min



D60201

双向平衡阀
高压梭阀
最高设定压力35MPa
最大流量为60L/min

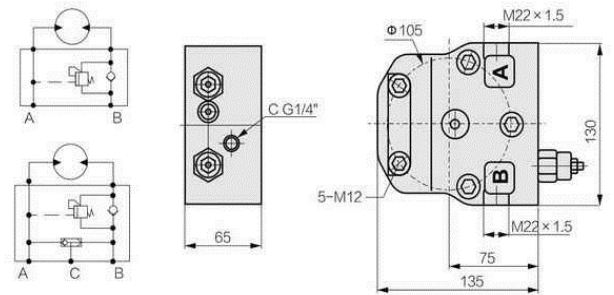
Bidirectional counterbalance valve
High pressure shuttle valve
Maximum setting pressure is 35MPa
Maximum flow is 60L/min



D601

单向平衡阀
最高设定压力35MPa
最大流量为60L/min

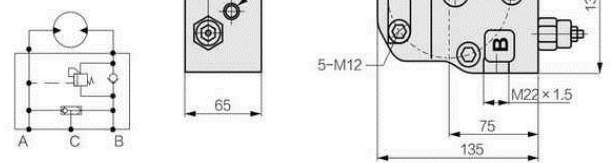
Single counterbalance valve
Maximum setting pressure is 35MPa
Maximum flow is 60L/min



D60101

单向平衡阀
高压梭阀
最高设定压力35MPa
最大流量为60L/min

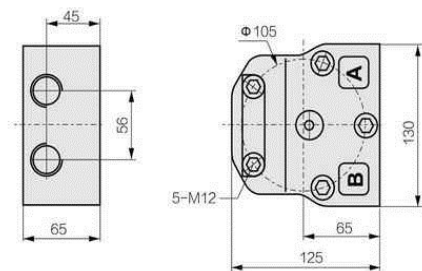
Single counterbalance valve
High pressure shuttle valve
Maximum setting pressure is 35MPa
Maximum flow is 60L/min



D60L

A、B油口为G3/4"
额定压力为32MPa
额定流量为100L/min
(相当于D31)

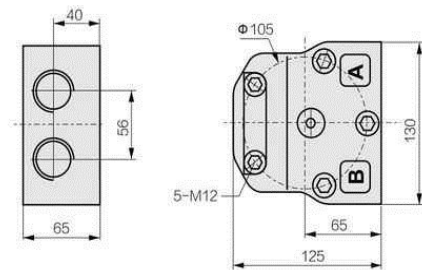
The diameter of port A and port B is G3/4"
Rated pressure is 35MPa
Rated flow is 100L/min
(Equal to D31)



D60LG

A、B油口为M27 x 2
额定压力为32MPa
额定流量为100L/min

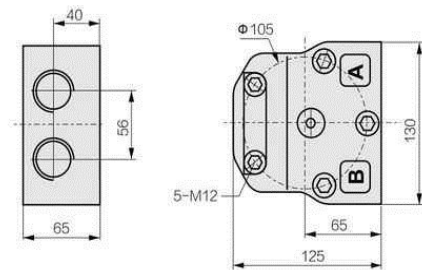
The diameter of port A and port B is M27 x 2
Rated pressure is 35MPa
Rated flow is 100L/min



D60L0

A、B油口为G1"
额定压力为32MPa
额定流量为100L/min
(相当于D310)

The diameter of port A and port B is G1"
Rated pressure is 35MPa
Rated flow is 100L/min
(Equal to D310)



集成式液压配流器

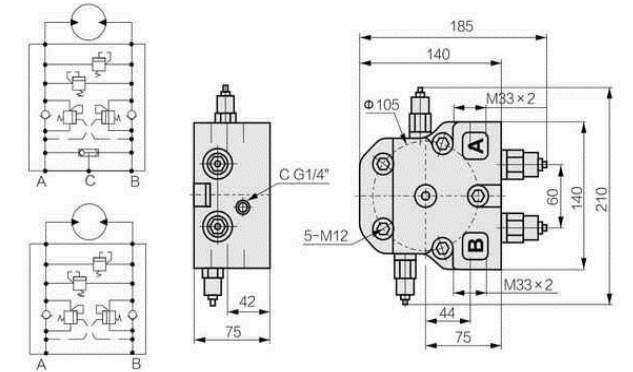
Distributors with integration valve block

Jinghan

D120221

双向过载阀, 双向平衡阀
高压梭阀
最高设定压力35MPa
最大流量为120L/min

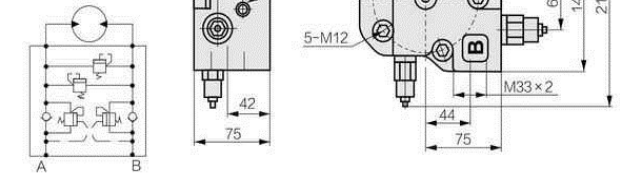
Bidirectional overload valve
Bidirectional counterbalance valve
High pressure shuttle valve
Maximum setting pressure is 35MPa
Maximum flow is 120L/min



D12022

带双向过载阀, 双向平衡阀
最高设定压力35MPa
最大流量为120L/min

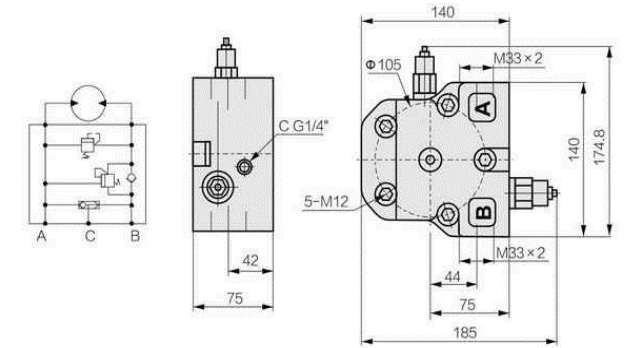
Bidirectional overload valve
Bidirectional counterbalance valve
Maximum setting pressure is 35MPa
Maximum flow is 120L/min



D120111

单向过载阀, 单向平衡阀
高压梭阀
最高设定压力35MPa
最大流量为120L/min

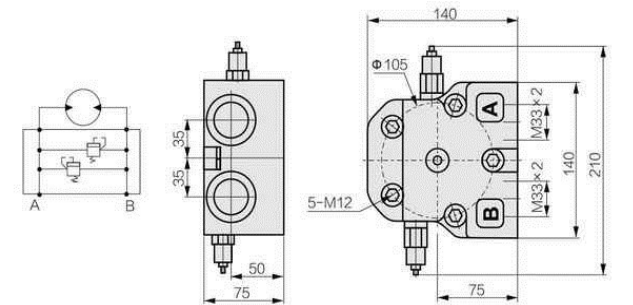
Single overload valve
Single counterbalance valve
High pressure shuttle valve
Maximum setting pressure is 35MPa
Maximum flow is 120L/min



D12002

双向过载阀
最高设定压力35MPa
最大流量为120L/min

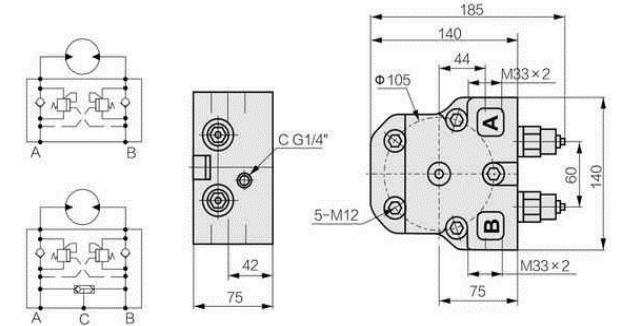
Bidirectional overload valve
Maximum setting pressure is 35MPa
Maximum flow is 120L/min



D1202

双向平衡阀
最高设定压力35MPa
最大流量为120L/min

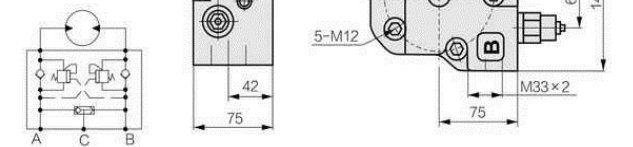
Bidirectional counterbalance valve
Maximum setting pressure is 35MPa
Maximum flow is 120L/min



D120201

双向平衡阀
高压梭阀
最高设定压力35MPa
最大流量为120L/min

Bidirectional counterbalance valve
High pressure shuttle valve
Maximum setting pressure is 35MPa
Maximum flow is 120L/min



集成式液压配流器

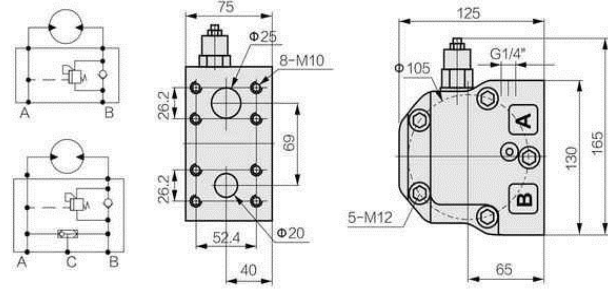
Distributors with integration valve block



D1201

单向平衡阀
最高设定压力35MPa
最大流量为120L/min

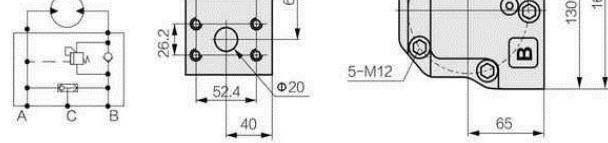
Single counterbalance valve
Maximum setting pressure is 35MPa
Maximum flow is 120L/min



D120101

单向平衡阀
高压梭阀
最高设定压力35MPa
最大流量为120L/min

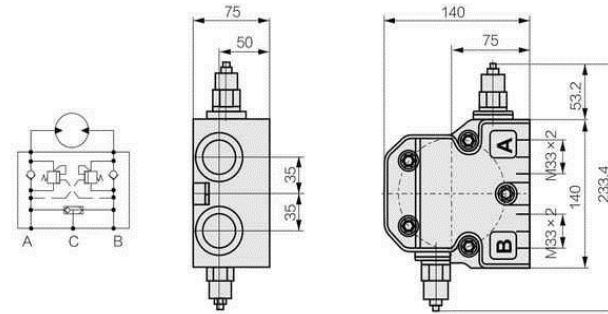
Single counterbalance valve
High pressure shuttle valve
Maximum setting pressure is 35MPa
Maximum flow is 120L/min



D120201

双向平衡阀
高压梭阀
最高设定压力35MPa
最大流量为120L/min

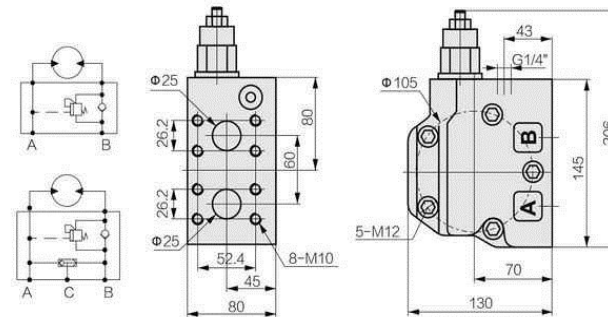
Bidirectional counterbalance valve
High pressure shuttle valve
Maximum setting pressure is 35MPa
Maximum flow is 120L/min



D2401

单向平衡阀
最高设定压力35MPa
最大流量为240L/min

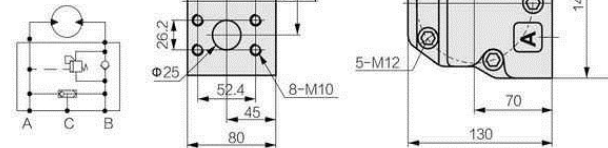
Single counterbalance valve
Maximum setting pressure is 35MPa
Maximum flow is 240L/min



D240101

单向平衡阀
高压梭阀
最高设定压力35MPa
最大流量为240L/min

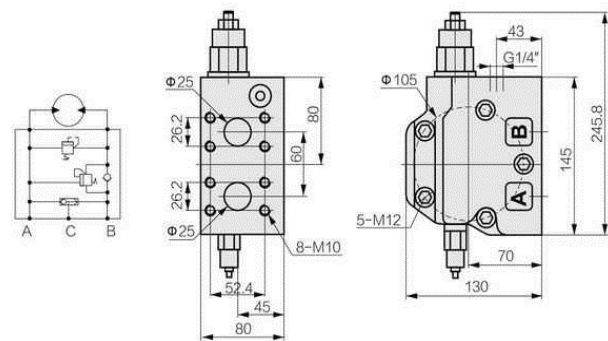
Single counterbalance valve
High pressure shuttle valve
Maximum setting pressure is 35MPa
Maximum flow is 240L/min



D240111

单向平衡阀及单向过载阀
高压梭阀
最高设定压力35MPa
最大流量为240L/min

Single overload valve
Single counterbalance valve
High pressure shuttle valve
Maximum setting pressure is 35MPa
Maximum flow is 240L/min



集成式液压配流器

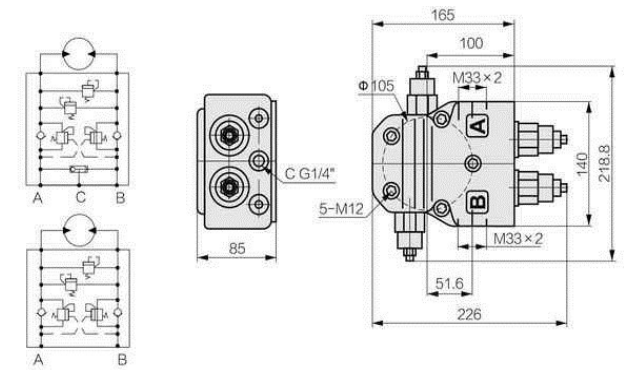
Distributors with integration valve block



D240221

双向过载阀, 双向平衡阀
高压梭阀
最高设定压力35MPa
最大流量为240L/min

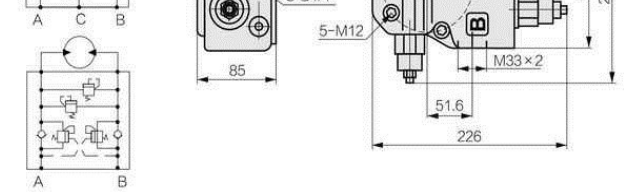
Bidirectional overload valve
Bidirectional counterbalance valve
High pressure shuttle valve
Maximum setting pressure is 35MPa
Maximum flow is 240L/min



D24022

带双向过载阀及平衡阀
最高设定压力35MPa
最大流量为240L/min

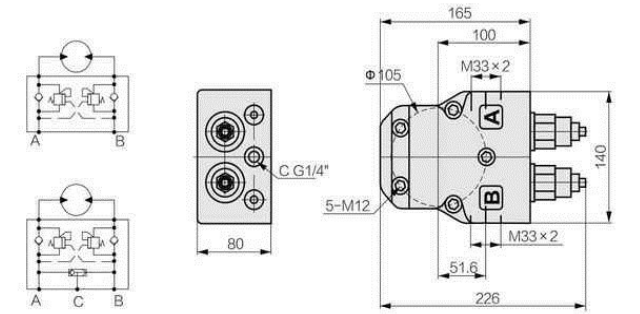
Bidirectional overload valve
Bidirectional counterbalance valve
Maximum setting pressure is 35MPa
Maximum flow is 240L/min



D2402

双向平衡阀
最高设定压力35MPa
最大流量为240L/min

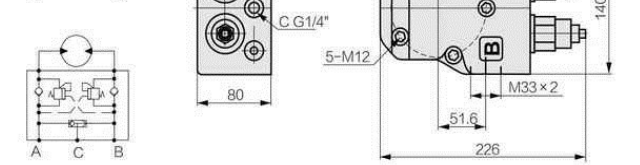
Bidirectional counterbalance valve
Maximum setting pressure is 35MPa
Maximum flow is 240L/min



D240201

双向平衡阀
高压梭阀
最高设定压力35MPa
最大流量为240L/min

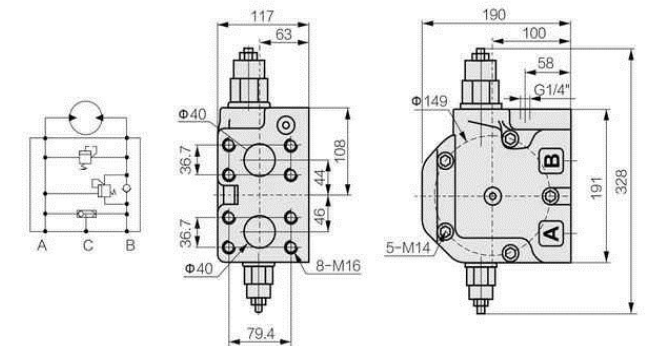
Bidirectional counterbalance valve
High pressure shuttle valve
Maximum setting pressure is 35MPa
Maximum flow is 240L/min



D480111

单向平衡阀及单向过载阀
高压梭阀
最高设定压力35MPa
最大流量为480L/min

Single overload valve
Single counterbalance valve
High pressure shuttle valve
Maximum setting pressure is 35MPa
Maximum flow is 480L/min



D480101

单向平衡阀
高压梭阀
最高设定压力35MPa
最大流量为480L/min

Single counterbalance valve
High pressure shuttle valve
Maximum setting pressure is 35MPa
Maximum flow is 480L/min

