

产品概述

我公司生产的液压马达主要零件由加工中心和数控机床加工，所有密封、高强度内六角螺钉由德国、意大利、台湾进口，外表铸件采用精密铸造球墨铸铁，从而保证产品性能和外观质量超过国内外同类产品水平。它具有以下特点：

- 1、采用偏心轴及较低激振频率的五柱塞结构，因而具有低噪音的特点。
- 2、启动扭矩大，低速稳定性好，能在很低速度下平稳运转。
- 3、采用先进的可补偿式端面配流结构，可靠性好，泄漏少，柱塞与缸体间采用新型密封环密封，具有很高的容积效率。
- 4、曲轴与连杆间由滚柱支承，因而具有很高的机械效率。
- 5、旋转方向可逆，输出轴允许承受一定的径向和轴向力。
- 6、具有较高的功率质量比，体积重量相对较小。

产品适用范围

由于 JHM 系列低速大扭矩液压马达具有可靠性好、效率高、寿命长、噪音低、转速范围宽等一系列特点，因而适用范围广，可广泛应用于矿山建筑工程机械、起重运输设备、重型冶金机械、石油煤矿机械、船舶甲板机械、机床、轻工、塑料机械、地质钻探设备等各种机械的液压传动系统中，特别适用于注塑机的螺杆驱动、提升绞盘、卷筒的驱动、各种回转机构的驱动、履带和轮子行走机构的驱动等传动机械中。

注意事项

- 1、过滤：正常的工业用过滤精度推荐为25微米，对低压、低速或间隙工况时可以允许精度为75微米。
- 2、粘度：最佳性能应在良好的粘度条件下才能获得，因此马达在大多数工况下，粘度应在 15—1000厘范围内，该范围保证满意地工作。
- 3、泄漏：泄油口应单独地与油箱接通，一般下壳体允许最大压力为0.1Mpa。若压力过高，易使油封损坏，引起外泄。
- 4、液压马达可以任意位置安装，安装马达的支架必须有足够的刚性，安装时应保证液压马达所联接的转动主轴与液压马达的输出轴同轴线。
- 5、泄油管的最大水平位置应高于马达壳体的最高水平位置，以防马达壳体内的油液排空。
- 6、首次启动前，必须向液体马达壳体内注满液压油，以防损坏。
- 7、严格保证联接油口的清洁度，不允许任何固体异物进入。
- 8、减少液压马达出轴所受径向负荷，可以使液压马达寿命延长。

Product overview

Our company's hydraulic motor's main parts and components are machined by machining center and CNC machine tools. All the seal parts and high strength interior hexagonal bolts are imported from Germany, Italia and Taiwan. The casting is made of polyester sand nodular cast iron to ensure the performance and appearance quality of the products to overpass the similar products in China and overseas market. The product has the following features:

1. As the product adopts eccentric crankshaft and five-piston structure with comparatively low frequency, it has low noise characteristic;
2. It has big startup torque, perfect stability at low speed, so it can stably operate at very low speed;
3. The plane compensation port plate has perfect reliability and almost no leakage. The piston bushing is sealed by seal ring, so it has comparatively high volume efficiency;
4. The bent axle and the connecting rod are supported by roller, so it has very high mechanical efficiency;
5. The rotational direction is reversible, the output shaft allows endure certain radial and axial force;
6. It has comparatively high power mass ratio. The volume and weight relatively small.

Scope of application

As JHM series low speed high torque hydraulic motor has such characteristics as: perfect reliability, high efficiency, long life, low noise and wide rotation speed range, it has wide application range. It can be widely applied in the hydraulic and transmission systems of construction engineering machinery, lifting and transportation equipment, heavy type metallurgical machinery, petroleum and coal mining machinery, ship's deck machinery, machine tools, light industry and plastic machinery, geological prospecting equipments. This product is especially applicable for the transmission devices of screw drive of plastic injection machine, hoisting winch, all sorts of rotational mechanism and the track and wheel travel machine.

Notes:

1. Filtration: the recommended filtration precision for normal industrial use is 25 μ m, and in the working condition of low pressure, low speed or interval, the allowable precision is 75 μ m.
2. Oil viscosity: the optimum performance could only be obtained under proper oil viscosity between 15-1000 cst.
3. Leakage: drain port should be connected separately to the tank. Normally the maximum pressure for the motor body is 0.1Mpa. If the pressure is too high, it is easy to make the oil seal damage and cause to leak.
4. Hydraulic motor can be installed in any position with rigid support, when installed, shafts of the motor and its transmission should be concentric.
5. The top line of the drain pipe should be higher than that of the motor body, in case emptying oil storage.
6. Before the first start-up, it must fill hydraulic oil in the hydraulic motor body, to avoid the damage.
7. Strictly maintain the cleanness of the oil port, and keep away any solid particles away.
8. Release both the radial and axial loads of the output shaft to enable longer life of the motor.

型号说明 Description of model

JHM

配流器型号，订货时若不注明，则按标准配。

Oil distribution casing type: it will be configured with standard casing if no special requirement is marked in order during ordering.

输出轴类型

- 1、无字母表示标准矩形花键轴（以外径定心）
- 2、B表示平键轴
- 3、I表示内花键轴（以内径定心）

Form of output shaft

1. None —— standard rectangular spline shaft (the center is up to exterior diameter).
2. B —— flat key shaft
3. I —— internal spline shaft (the center is up to interior diameter).

名义排量 (ml/r)
Theoretical displacement(ml/r)

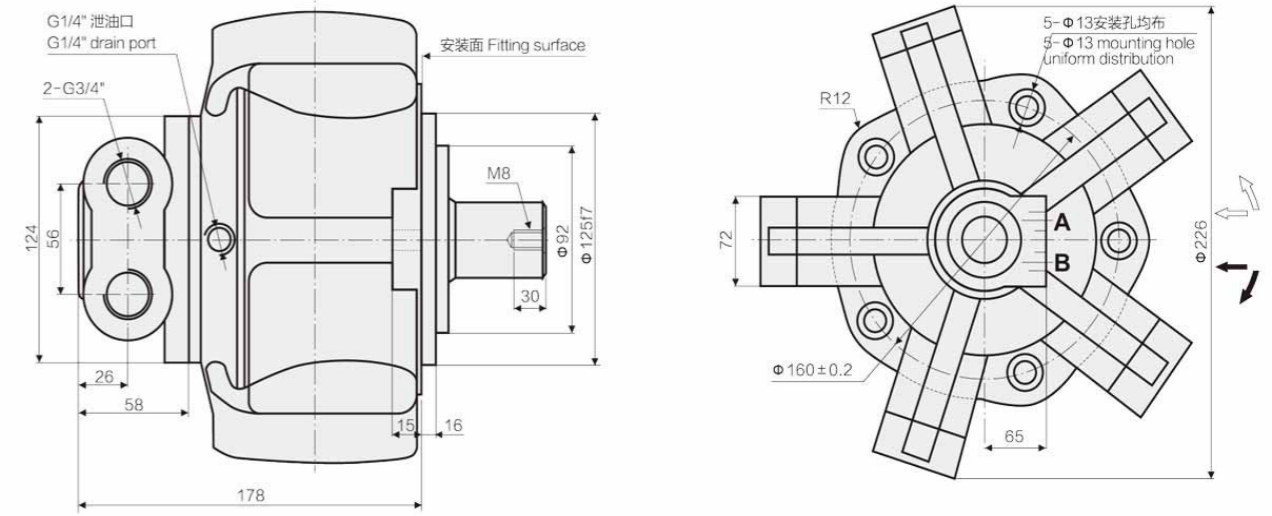
系列（同一系列，其外型尺寸相同）
Series (the same series have the same figuration)

径向柱塞低速大扭矩液压马达
Radial piston low speed high torque hydraulic motor

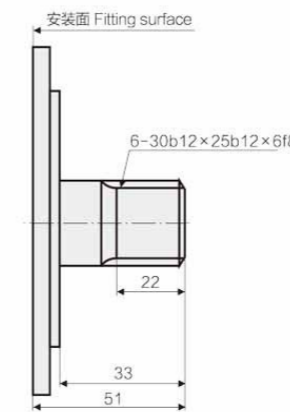
技术参数 Technical data

型号 Type	排量 Displacement (ml/r)	压力 Pressure (Mpa)		额定扭矩 Rated torque (N.m)	单位扭矩 Specific torque (N.m/MPa)	转速范围 Speed range (r/min)	重量约 Weight ≈ (kg)
		额定压力 Rated	尖峰压力 Peak				
JHM1-63	64	20	24	184	9.2	15-500	23
JHM1-80	78	18	22	201	11.2	15-500	
JHM1-100	96	18	22	248	13.8	15-500	
JHM1-125	126	18	22	325	18.1	15-500	
JHM1-160	159	16	20	365	22.8	15-500	
JHM2-100	113	20	24	324	16.2	12-400	28
JHM2-150	159	20	24	456	22.8	12-400	
JHM2-175	180	18	22	465	25.8	12-400	
JHM2-200	206	18	22	532	29.5	12-400	
JHM2-250	235	16	20	539	33.7	12-400	
JHM2-280	276	16	20	633	39.6	12-400	35
JHM3-200	201	18	22	519	28.8	10-350	
JHM3-250	254	18	22	656	36.4	10-350	
JHM3-300	289	18	22	746	41.4	10-350	
JHM3-350	340	18	22	878	48.8	10-350	
JHM3-400	380	16	20	872	54.5	10-350	60
JHM6-400	397	18	22	1025	56.9	5-320	
JHM6-450	452	18	22	1167	64.8	5-320	
JHM6-500	491	18	22	1268	70.4	5-320	
JHM6-600	594	18	22	1533	85.2	5-320	
JHM6-700	683	18	22	1785	99.1	5-320	71
JHM6-750	754	16	20	1751	109	5-320	
JHM6-800	799	16	20	1856	116	5-320	
JHM8-600	617	18	22	1627	90	5-280	
JHM8-700	710	18	22	1872	104	5-280	
JHM8-800	810	18	22	2136	118	5-280	90
JHM8-900	889	16	20	2084	130	5-280	
JHM8-1000	1000	16	20	2344	146	5-280	
JHM11-700	682	20	24	1980	99	5-280	
JHM11-800	782	20	24	2270	114	5-280	
JHM11-900	894	20	24	2596	130	5-280	170
JHM11-1000	981	18	22	2563	142	5-280	
JHM11-1100	1104	18	22	2885	160	5-280	
JHM11-1200	1234	16	20	2866	179	5-280	
JHM11-1300	1301	16	20	3022	189	5-250	
JHM16-1400	1413	20	24	4102	205	5-250	320
JHM16-1600	1648	20	24	4785	239	5-250	
JHM16-1800	1814	18	22	4740	263	5-250	
JHM16-2000	2034	18	22	5315	295	5-250	
JHM16-2400	2401	16	20	5577	349	5-250	
JHM31-2500	2553	20	24	7412	371	5-200	700
JHM31-2800	2683	20	24	7790	389	5-200	
JHM31-3000	3063	18	22	8004	445	5-200	
JHM31-3150	3218	18	22	8501	472	5-200	
JHM31-3500	3462	18	22	9145	508	5-200	
JHM31-4000	4152	18	22	10968	609	5-200	700
JHM31-5000	4828	16	20	11337	709	5-160	
JHM100-6300	6133	16	20	14375	900	5-100	
JHM100-8000	7693	16	20	18032	1129	5-100	
JHM100-10000	10688	14	18	21921	1569	5-100	

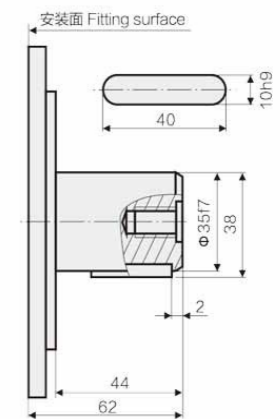
JHM1-63~160 外形尺寸 Dimension



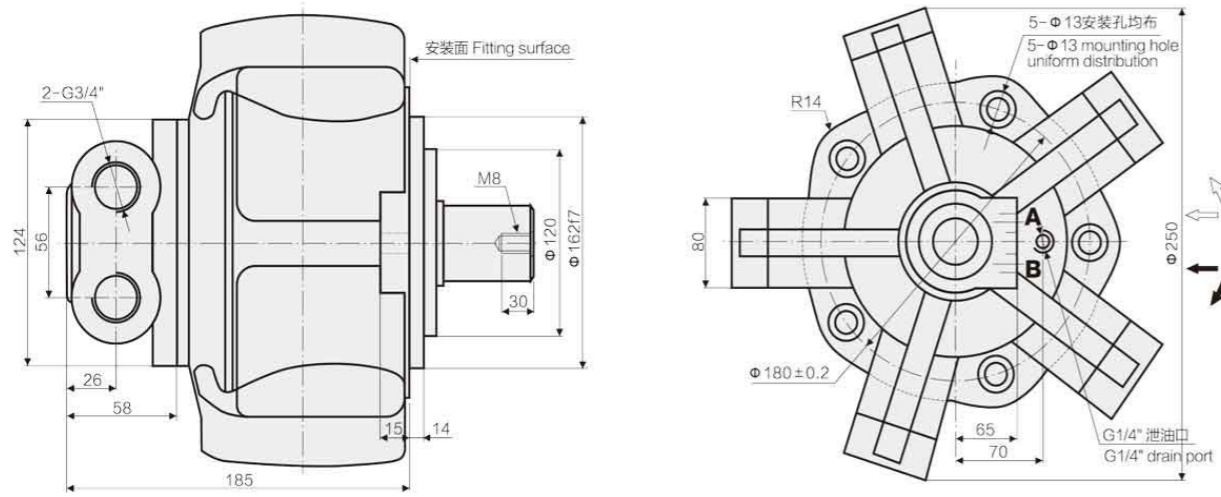
标准外花键: JHM1-**
External spline



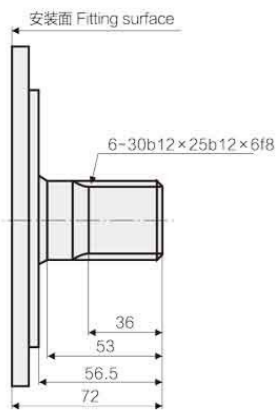
标准平键: JHM1-**B
Flat key



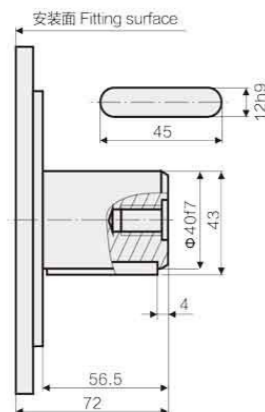
JHM2-100~280 外形尺寸 Dimension



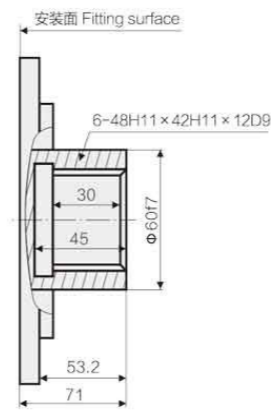
标准外花键: JHM 2-**
External spline



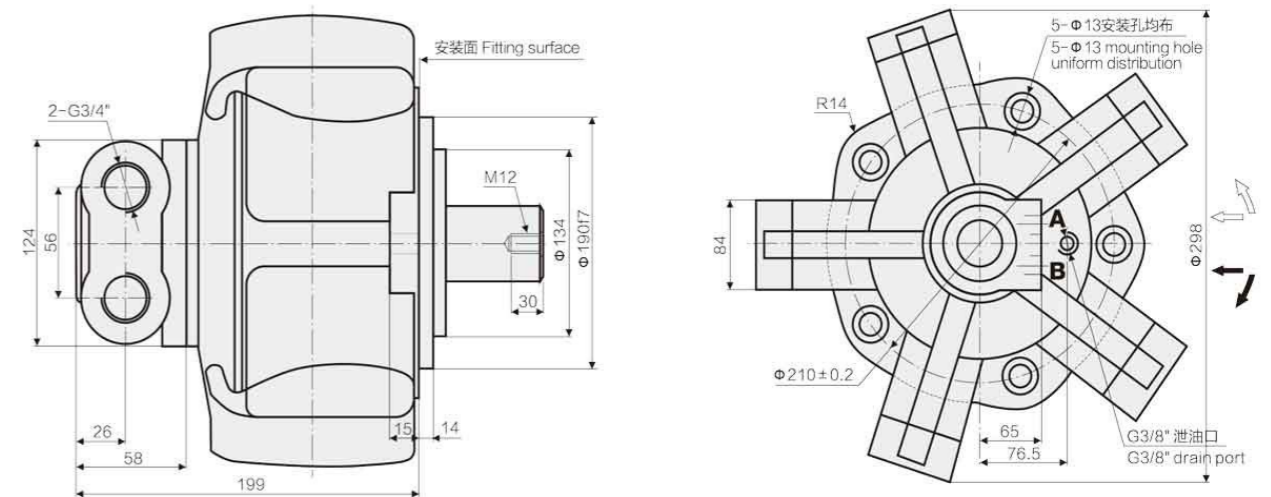
标准平键: JHM 2-**B
Flat key



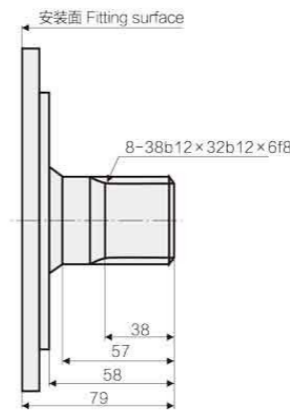
标准内花键: JHM 2-**I
Internal spline



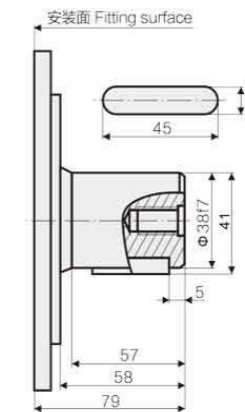
JHM3-200~400 外形尺寸 Dimension



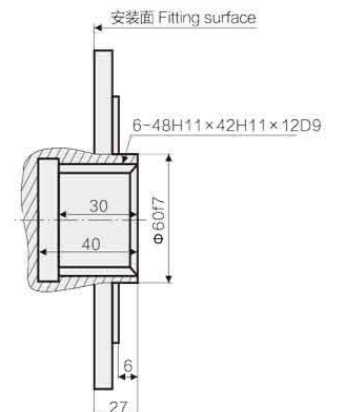
标准外花键: JHM 3-**
External spline



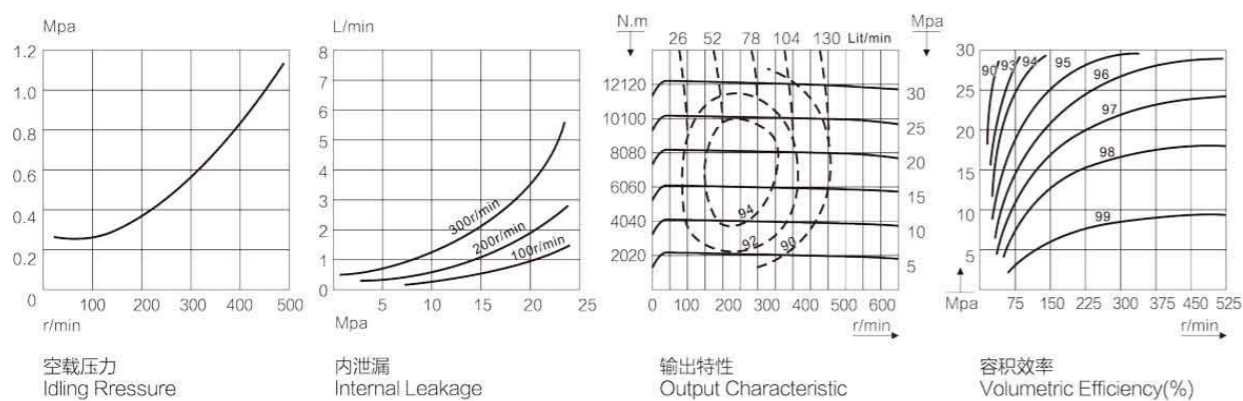
标准平键: JHM 3-**B
Flat key



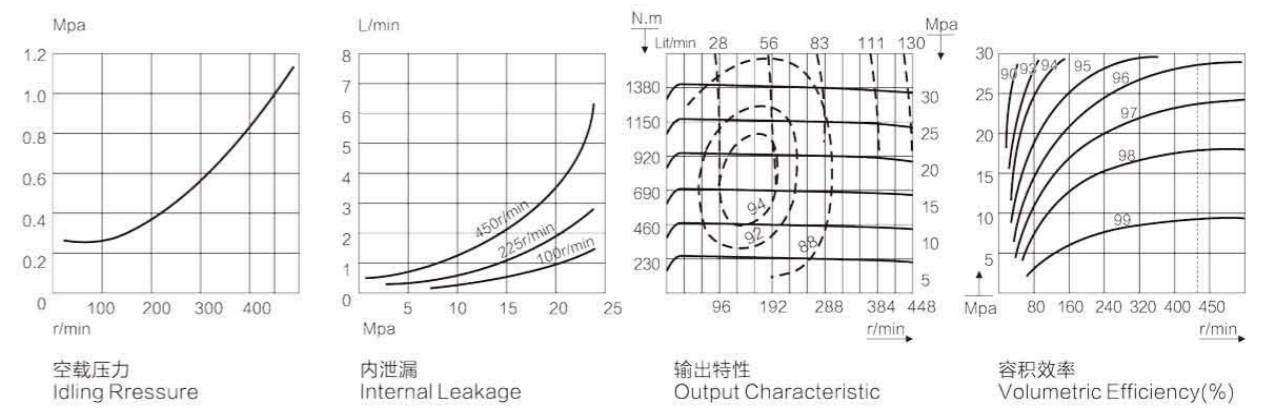
标准内花键: JHM 3-**I
Internal spline



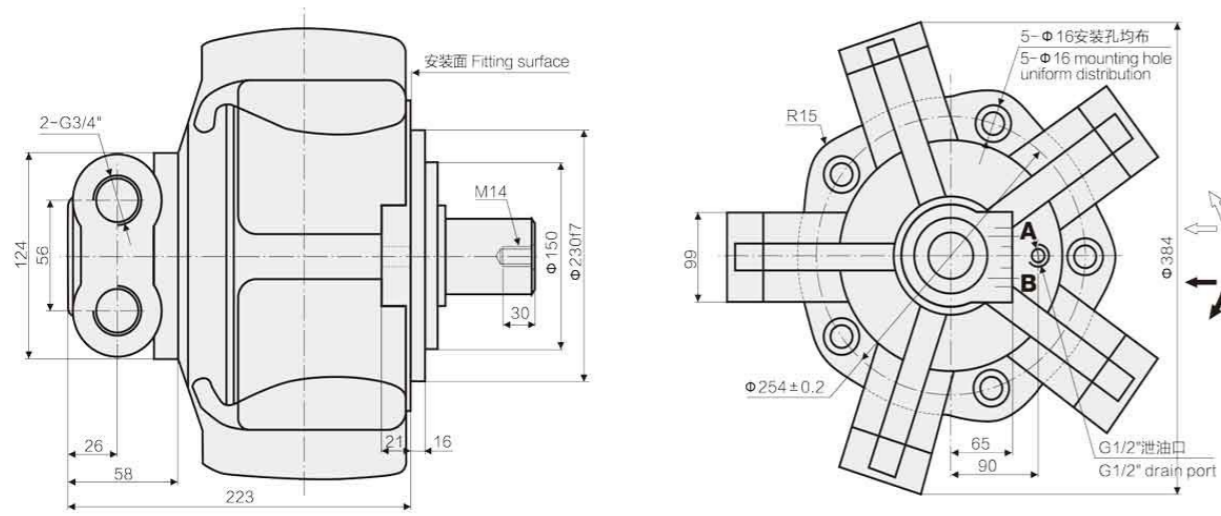
JHM2-250 特性曲线图 Performance



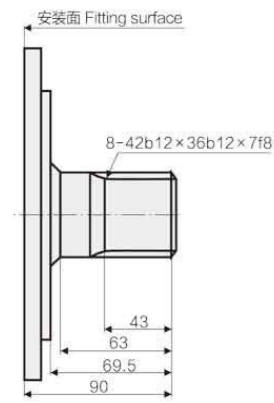
JHM3-300 特性曲线图 Performance



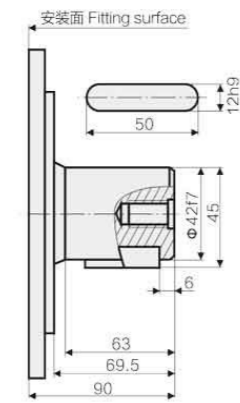
JHM6-400~800 外形尺寸 Dimension



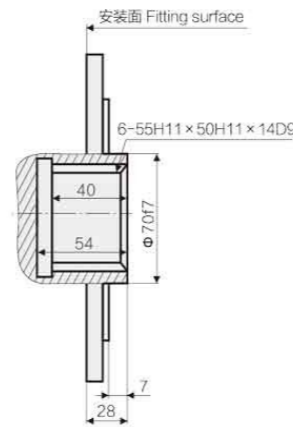
标准外花键: JHM6-**
External spline



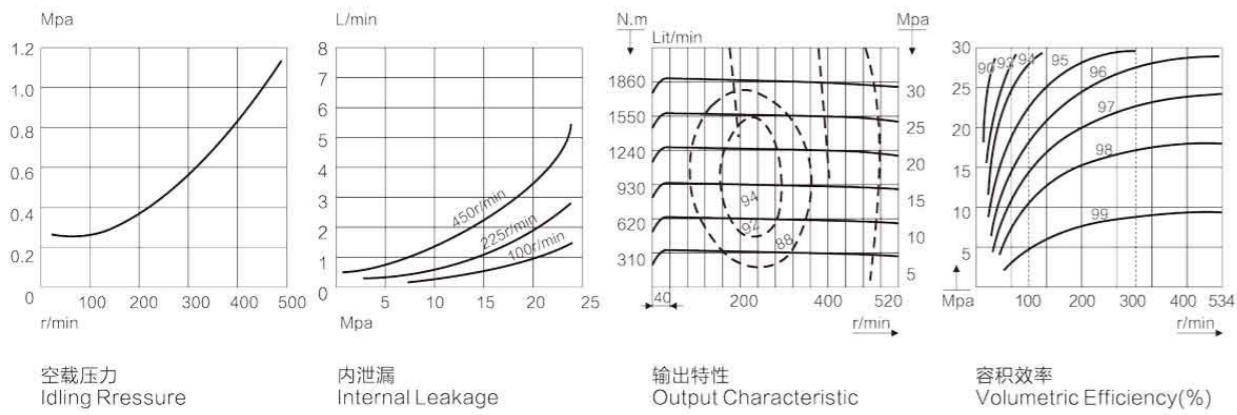
标准平键: JHM6-**B
Flat key



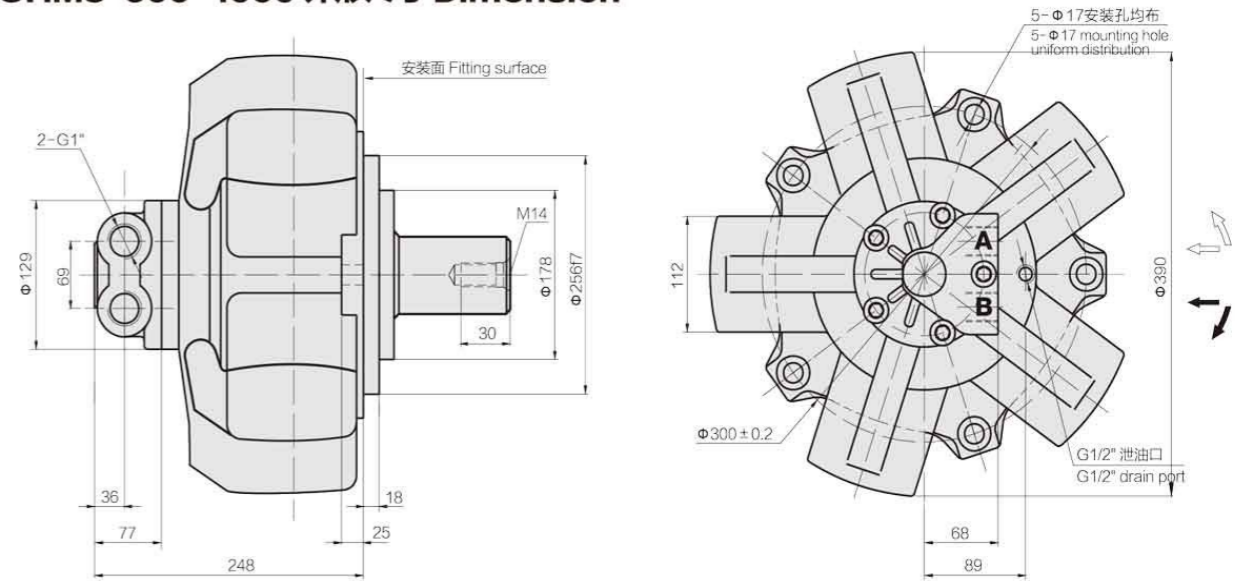
标准内花键: JHM6-**I
Internal spline



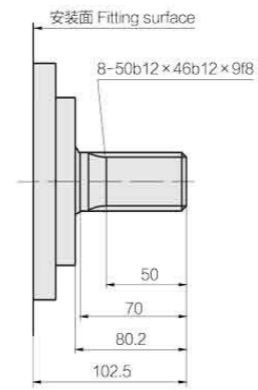
JHM6-500 特性曲线图 Performance



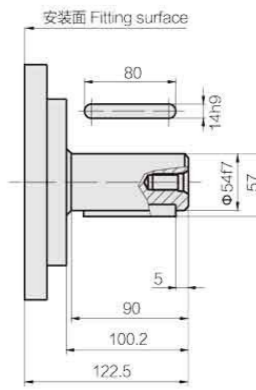
JHM8-600~1000 外形尺寸 Dimension



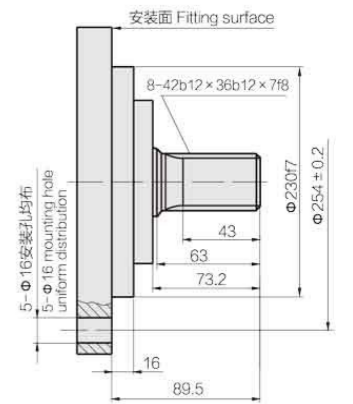
标准外花键: NHM8-**
External spline



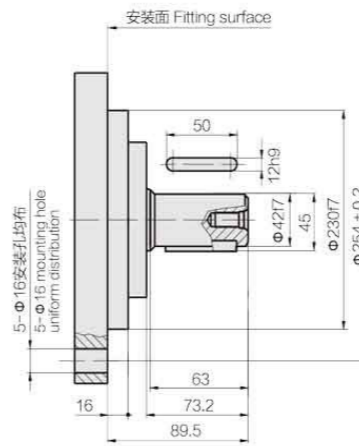
标准平键: NHM8-**B
Flat key



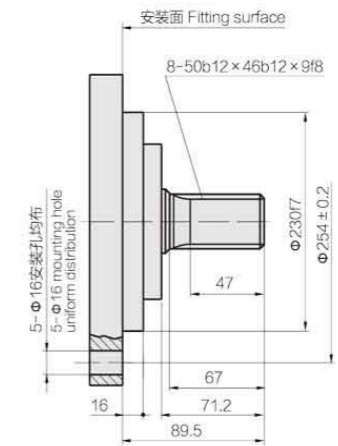
NHM8-**6M



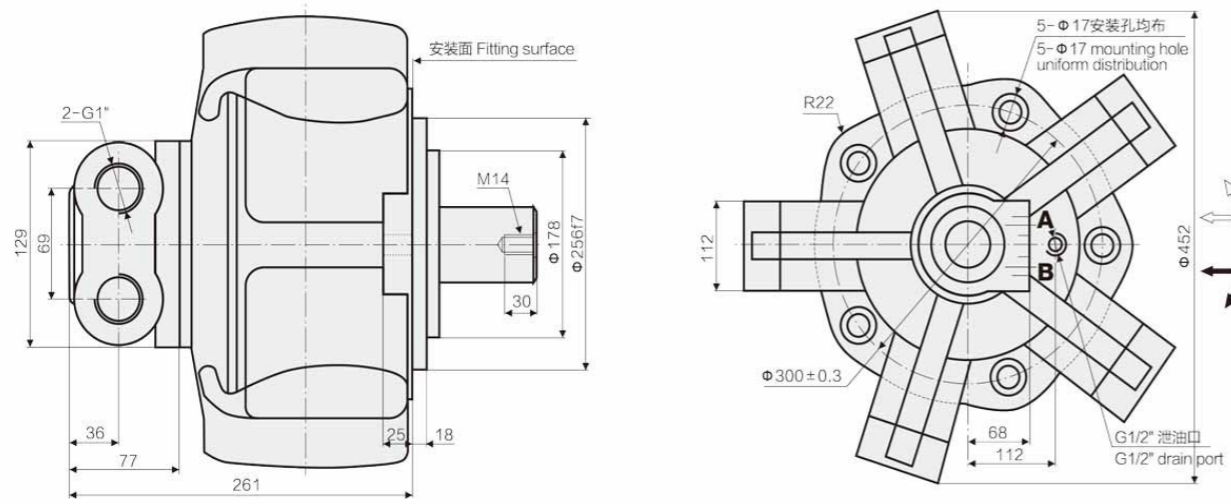
NHM8-**6MB



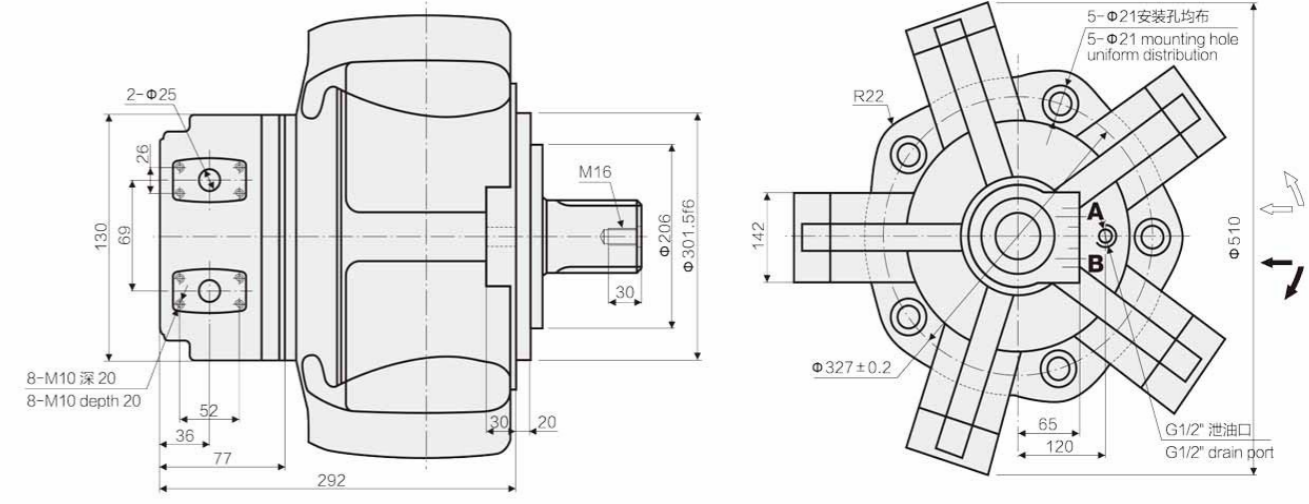
NHM8-**a2



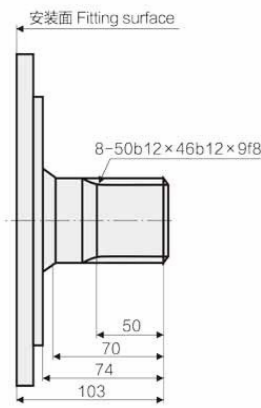
JHM11-700~1300 外形尺寸 Dimension



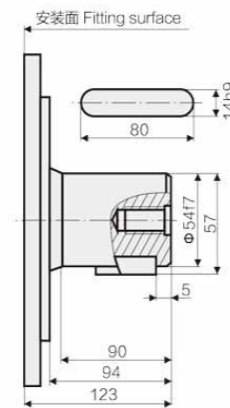
JHM16-1400~2400 外形尺寸 Dimension



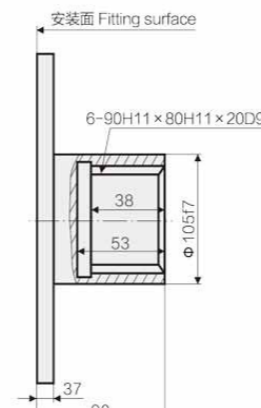
标准外花键: JHM11-**
External spline



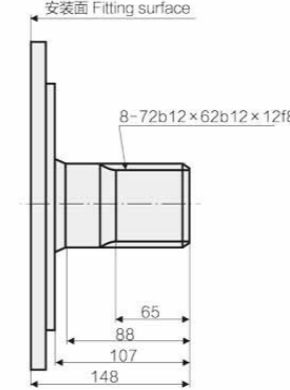
标准平键: JHM11-**B
Flat key



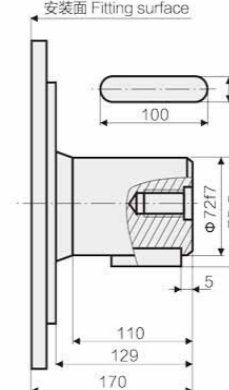
标准内花键: JHM11-**I
Internal spline



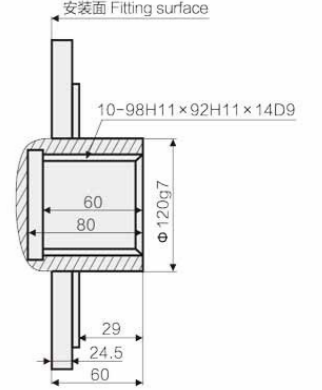
标准外花键: JHM16-**
External spline



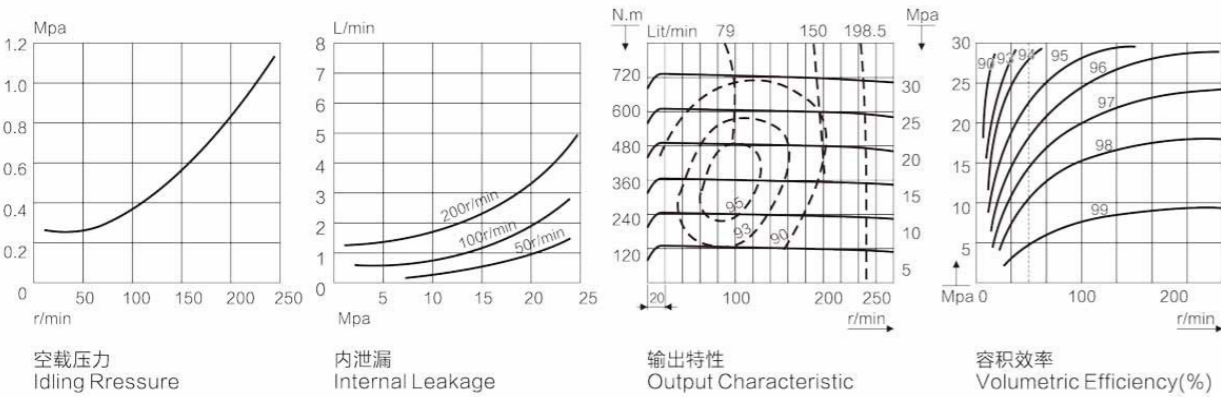
标准平键: JHM16-**B
Flat key



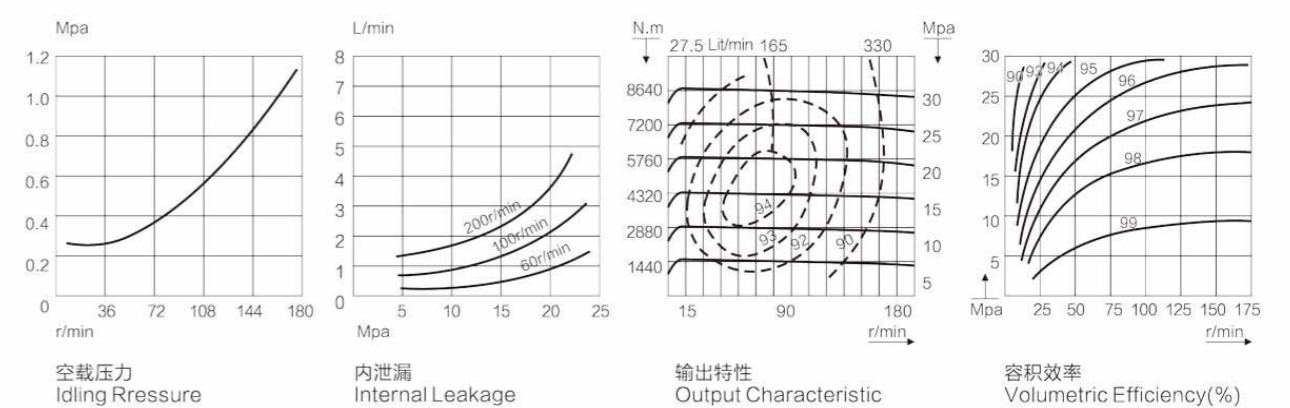
标准内花键: JHM16-**I
Internal spline



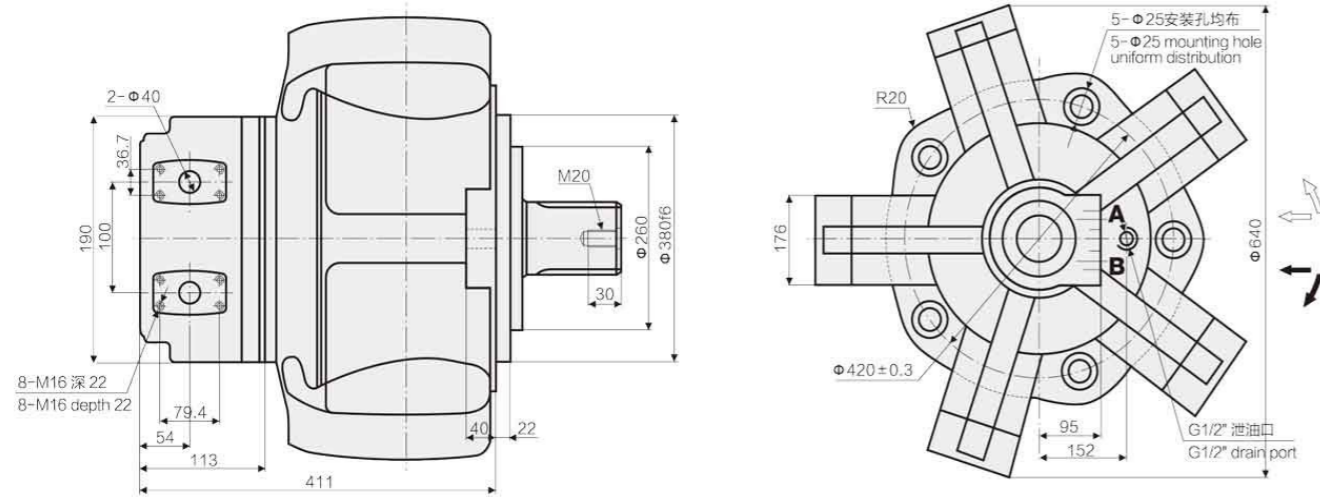
JHM11-800 特性曲线图 Performance



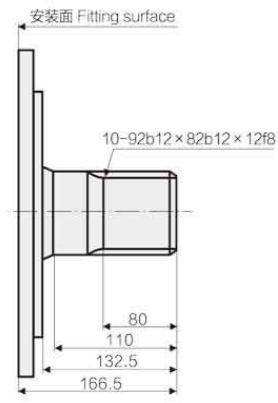
JHM16-1800 特性曲线图 Performance



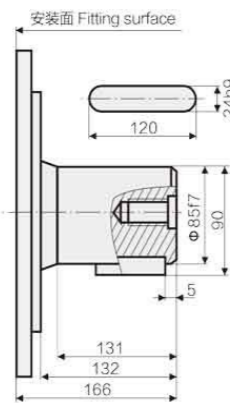
JHM31-2500~5000 外形尺寸 Dimension



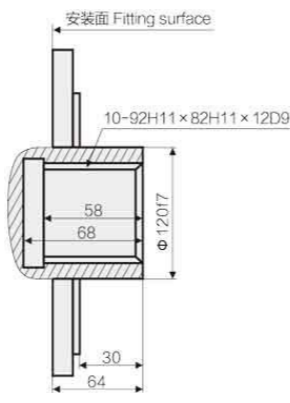
标准外花键: JHM31-**
External spline



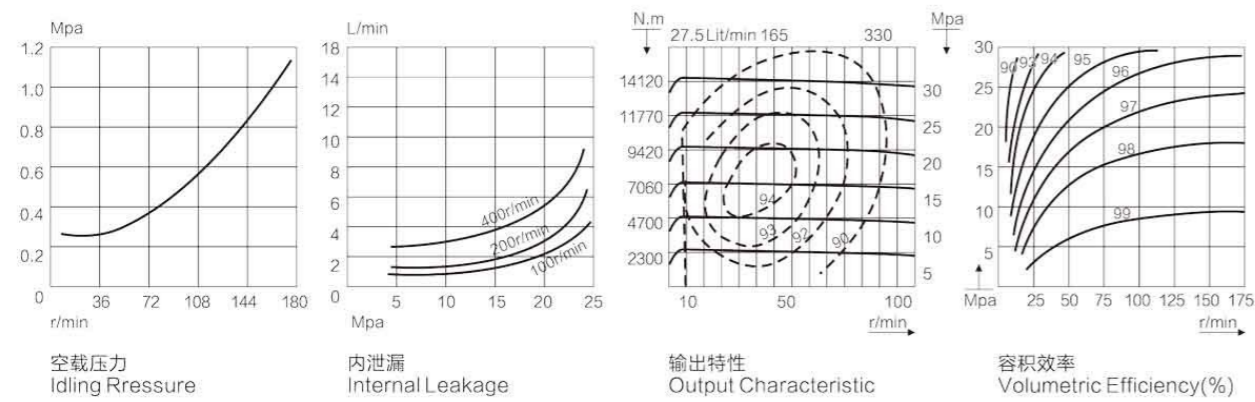
标准平键: JHM31-**B
Flat key



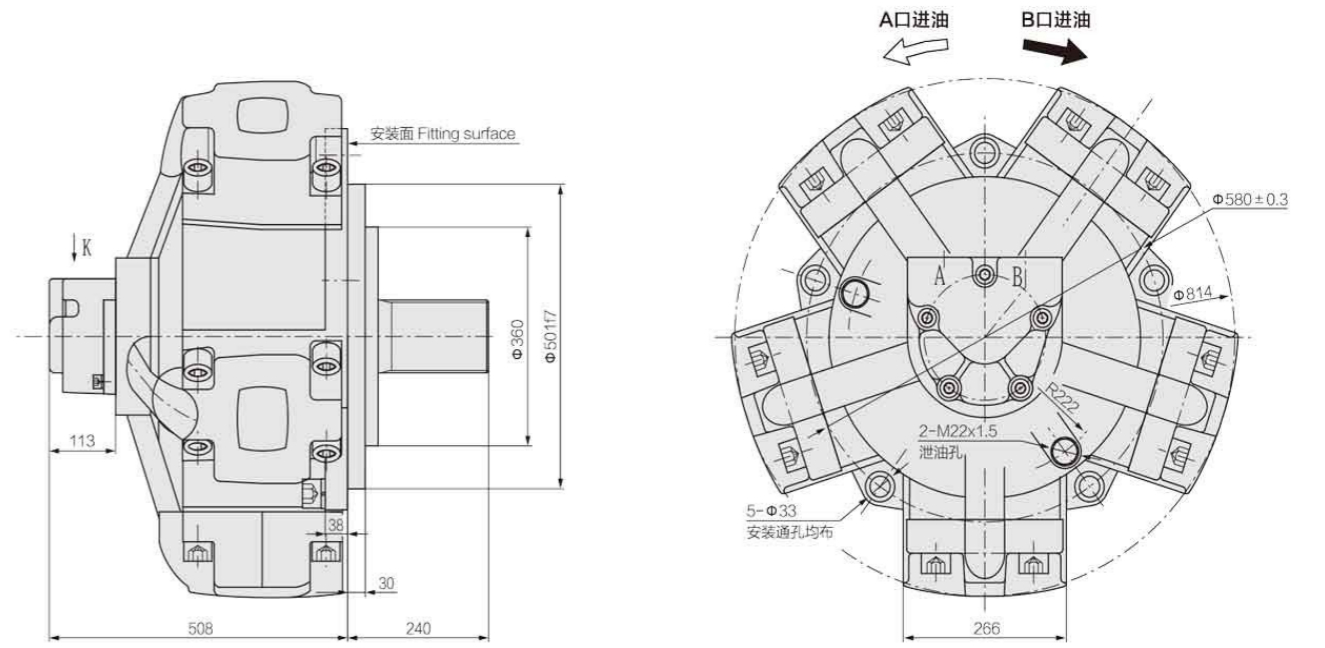
标准内花键: JHM31-**I
Internal spline



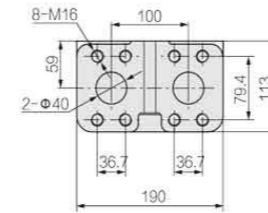
JHM31-3150 特性曲线图 Performance



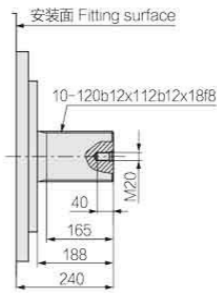
JHM100-6300~10000 外形尺寸 Dimension



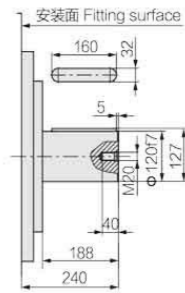
K向旋转
Direction rotation



JHM100-**



JHM100-**B



JHM100-**I

