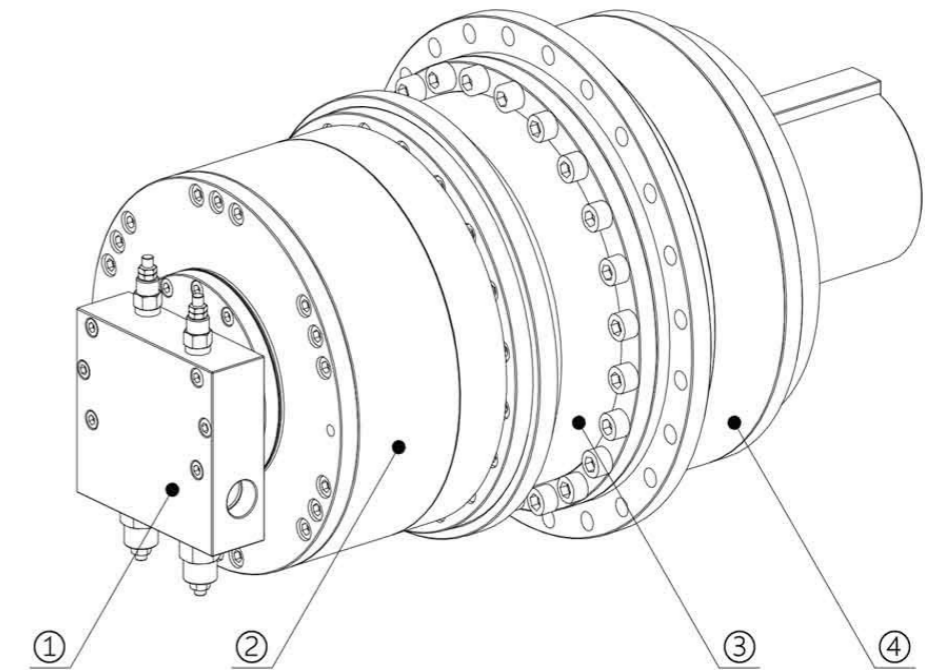


LC系列 液压传动装置

LC Series Hydraulic Transmission Device

产品目录 Catalogue

- ⊕ 液压马达
Hydraulic Motor
- ⊕ 绞车（卷扬机）
Winch
- ⊖ 液压传动装置
Hydraulic Transmission Device
 - ➔ LC系列 液压传动装置
LC Series Hydraulic Transmission Device 8-10MPa
 - MC系列 液压传动装置
MC Series Hydraulic Transmission Device 16-20MPa
 - GFB系列 液压传动装置
GFB Series Hydraulic Transmission Device 24-30MPa
 - MX系列 履带(车轮)液压驱动装置
MX Series Hydraulic Transmission for Track(Wheel) 16-20MPa
 - GFT系列 履带(车轮)液压驱动装置
GFT Series Hydraulic Transmission for Track(Wheel) 24-30MPa
- ⊕ 其他
Others



① 配流器 Distributor ② 液压马达 Hydraulic Motor ③ 制动器 Brake ④ 行星减速器 Planetary Gearbox

产品概述 / Brief Introduction

LC系列液压传动装置由液压马达、行星减速器、摩擦片式制动器及配流器组成。
液压马达采用径向柱塞式低速大扭矩马达，性能稳定可靠。
行星减速机内部配置了高承载能力的轴承，使得输出轴在输出扭矩的同时，亦可承受较大的径向与轴向外力。
常闭式液控摩擦片式制动器，在输入一定油压后刹车被打开（控制油路一般由配流器的高压梭阀口引出，出厂时已联接，客户无需另行安装）。
配流器可根据需要进行选择，较为常用的平衡阀、过载阀和用以控制制动器的梭阀都可集成其上。
LC系列液压传动装置具有结构紧凑，低速稳定性好，传动效率高，低噪音，经济性好等特点，广泛适用于工程机械、建筑、铁路、公路、船舶、石油、煤矿、冶金等领域。

LC series hydraulic transmission devices consist of hydraulic motor, planetary gearbox, friction disc brake and distributor.
The product uses radial ball plunger hydraulic motor, with stable and reliable performance.
The planetary gearbox is equipped with bearings with high bearing capacity, so that the output shaft can bear larger radial and axial forces while outputting torque.
The normally closed hydraulic control friction disc brake is opened after a certain oil pressure is input. (The control oil circuit is generally led out from the high-pressure shuttle valve port of the distributor, which has been connected when leaving the factory, so the customer does not need to install it separately)
The distributor can be selected according to the needs, and the commonly used balance valve, overload valve and shuttle valve can be integrated on it.
LC series hydraulic transmission devices have the characteristics of compact structure, good low-speed stability, high transmission efficiency, low noise, good economy and so on. It is widely used in engineering machinery, construction, railway, highway, ship, petroleum, coal mine, metallurgy and other fields.

型号说明 / Ordering Code

产品系列 / Series	LC / MC
减速箱齿轮模数 / Gear Module of Planetary Gearbox	2.5 / 3 / 4 / 5
液压传动装置总排量 / Total Displacement (ml/rev)	1900 / 2800 / 3700 18000 / 22000 / 26000
制动及安装形式 / Brake and Installations	
不带制动 / Without Brake	Z0
带制动 (外置式安装) / With Brake (External Installations)	Z1
带制动 (内置式安装) / With Brake (Internal Installations)	Z2
输出轴形式 / Type of Output Shaft	
螺纹法兰轴 / Thread Flange Connection	F
平键轴 / Flat Key Shaft	P
矩形花键轴 / Rectangular Spline	H
内矩形花键轴 / Rectangular Interior Spline	N
配流器型号 / Distributor Model of Hydraulic Motor	
参考QJM系列马达样本 / Refer to QJM Series Hydraulic Motor Catalogue	
不额外选装配流器 (直接连接马达油口) / Connect to Motor Oil Port Directly	N

型号举例 / Ordering Code Example

例1: LC3-5600Z1H-Q240221
表示该液压传动装置采用单级行星减速器传动, 齿轮箱模数为3, 总排量5600ml/rev, 产品带制动器, 外置式安装, 输出轴为矩形花键, 液压马达采用Q240221型配流器。

例2: LC5-22000Z0P-N
表示该液压传动装置采用单级行星减速器传动, 齿轮箱模数为5, 总排量22000ml/rev, 产品不带制动器, 输出轴为平键轴, 液压马达不额外带配流器。

Example 1: LC3-5600Z1H-Q240221
It means that the hydraulic transmission device is driven by single-stage planetary reducer, the module of gearbox is 3, the total displacement is 5600ml / rev, the product is equipped with brake, external installation, the output shaft is rectangular spline, and the distributor of the hydraulic motor is Q240221.

Example 2: LC5-22000Z0P-N
It means that the hydraulic transmission device is driven by single-stage planetary reducer, the module of gearbox is 5, the total displacement is 22000ml / rev, the product has no brakes, the output shaft is a flat key shaft, and the hydraulic motor has no additional distributors.

参数说明 / Parameter Description

- 总排量: 是液压马达排量与行星减速器传动比的乘积, 同时也是液压传动装置输出轴, 转一圈所需的理论供油量。
 - 额定扭矩: 是系统压力为 8MPa 或 10MPa 时, 考虑液压马达和行星减速器的机械效率后, 液压传动装置的实际输出扭矩。
 - 供油流量: 是考虑液压马达容积效率后, 液压传动装置所需的实际供油量。
- Total Displacement: It is the displacement of the hydraulic motor multiplied by the transmission ratio of the planetary gearbox, and it is also the theoretical oil supply required for the output shaft of the hydraulic transmission device to rotate one circle.
 - Rated Torque: Refers to the actual output torque of the hydraulic transmission device when the system pressure is 8MPa or 10MPa, considering the mechanical efficiency of the hydraulic motor and planetary reducer.
 - Oil Supply Flow: It is the actual oil supply required by the hydraulic transmission device after considering the volumetric efficiency of the hydraulic motor.

使用说明 / Instructions

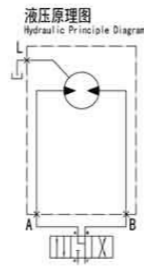
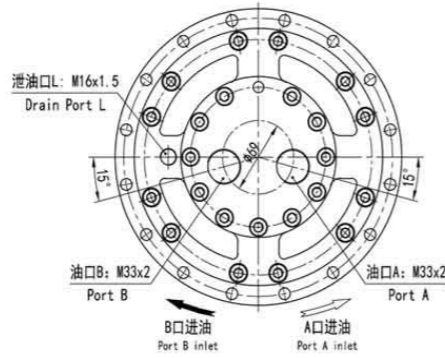
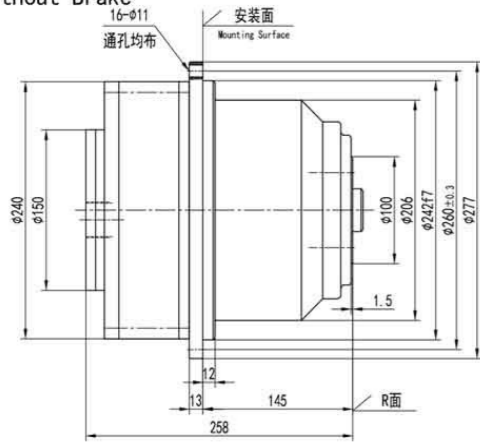
1. 液压传动装置由QJM系列马达驱动, 该类型马达有定量和变量两种规格。客户如需选装变量马达, 请在订货时注明。
2. 马达壳体允许最高压力0.5MPa, 如有特殊要求, 请提前与厂家联系。
3. 建议使用高质量、防泡沫、抗氧化的矿基液压油, 理想工作油温为30°C~50°C, 允许油温为-20°C~80°C。当油温低于10°C时, 必须使用低凝液压油。液压油的粘度推荐40~60厘沱, 允许为5~3000厘沱。
4. 液压油过滤精度推荐为25μm, 或更高过滤精度。
5. 液压传动装置均可双向旋转, 具体转向见附图。如用户要求与图示转向相反, 请在订货时注明。
6. 液压传动装置允许任何方向安装, 为保证马达内各运动副的润滑, 要求在工作之前将马达内充满液压油。泄油口位置的选择, 必须保证运转过程中, 壳体内充满液压油。
7. 根据不同工况, 用户可选用不同规格配流器。进行选择时, 主要考虑转速、流量、联接方式和所集成阀组等要求。
8. 用户如对各型产品有超功率使用要求, 请提前与厂家联系。

1. The hydraulic transmission devices are driven by QJM series hydraulic motor, which has fixed and variable displacements. If customers need variable displacement motor, please indicate when ordering..
2. The maximum allowable pressure of hydraulic motor casing is 0.5MPa. If customers have special requirements, please contact us in advance.
3. It is recommended to use high quality mineral-based hydraulic oil, which is anti-wear, anti-foam and anti-oxidation. The ideal oil temperature is between 30 °C and 50 °C. The allowable oil temperature is between -20 °C and 80 °C. When the oil temperature is lower than 10 °C, please use low-freezing hydraulic oil. The oil viscosity is between 40cSt and 60cSt, and the allowable viscosity is between 5cSt and 3000cSt.
4. It is recommended to use hydraulic oil with a filter rating of 25μm or even higher.
5. The hydraulic transmission devices are bi-directional. See attached drawings for more information. Reverse the direction is available if customers request so when placing an order.
6. The hydraulic transmission devices can be installed in any direction. To ensure the smooth movement of kinematic pairs in the hydraulic motor, please fill the motor casing with hydraulic oil before working. The oil drain port must be positioned in such a way that there is always sufficient hydraulic oil in the motor casing.
7. Customers can choose different types of distributors for the hydraulic transmission device based on different working conditions. Please take into consideration speed, flow, connection type and function of integral valve block when select distributors.
8. If customers require over power operation, please contact us in advance.

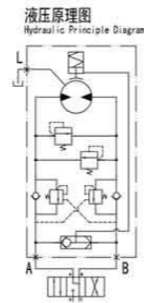
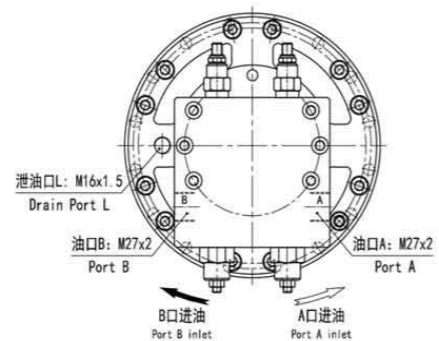
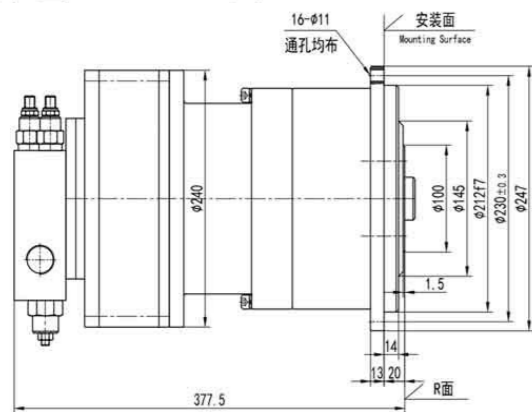
LC2.5

Jinghan

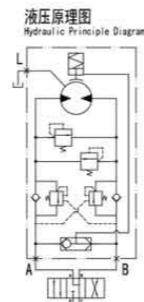
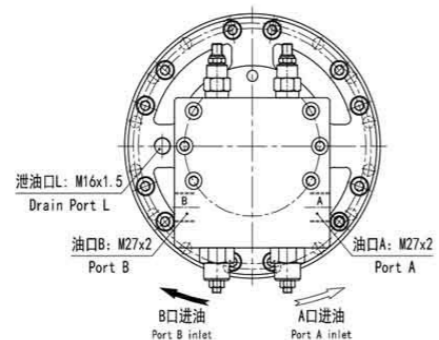
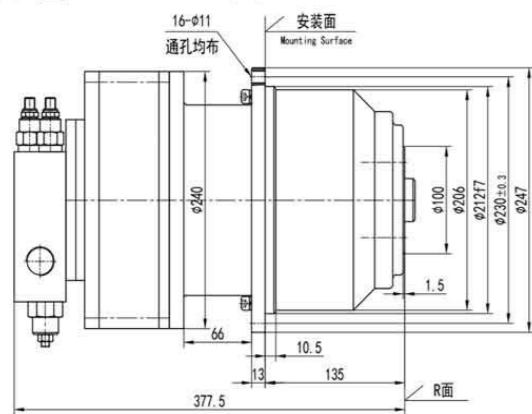
无制动 Without Brake



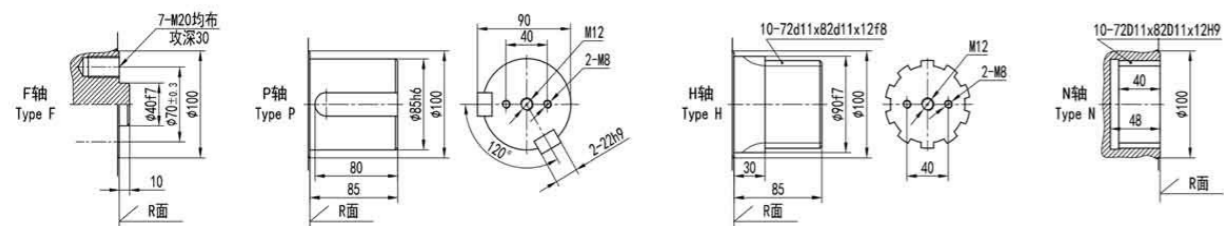
带制动 (Z1型) With Brake (Z1)



带制动 (Z2型) With Brake (Z2)



输出轴形式 Type of Output Shaft



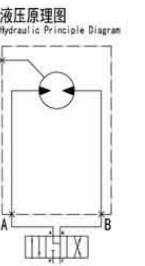
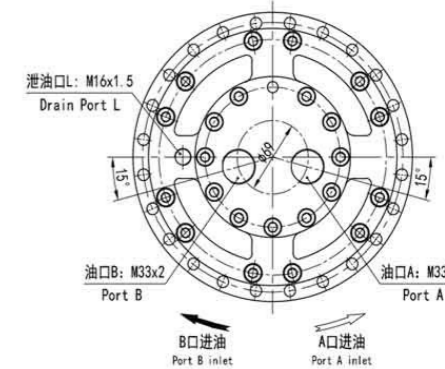
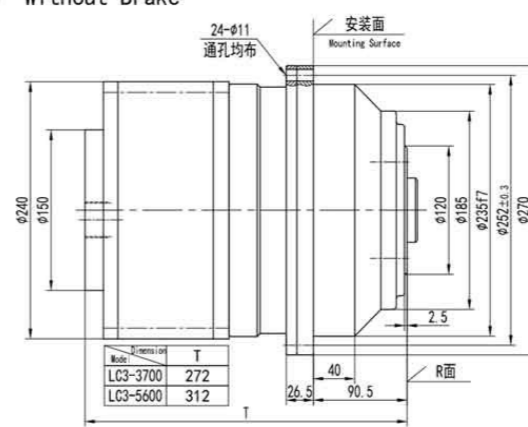
型号 Model	额定扭矩 (Nm) Rated Torque		总排量 Displacement (ml/rev)	转速 Speed (r/min)	供油流量 Oil Supply (L/min)	静制动扭矩 Brake Torque (Nm)	液压马达 Hydraulic Motor	减速比 Gear Ratio	重量 Weight (kg)
	8 MPa	10 MPa							
LC2.5-1900	1992	2490	1898	34	70	4500	QJM11-0.32	5.6	80
LC2.5-2800	3124	3905	2778	26.5	80	5500	QJM11-0.5	5.6	80
LC2.5-3700	4184	-	3718	20	80	5500	QJM11-0.63	5.6	80

注: 可根据客户要求, 调整产品外形尺寸
Note: Contact us if there are any requirements

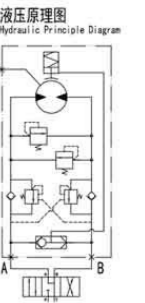
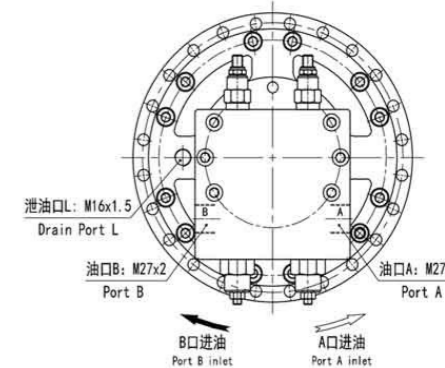
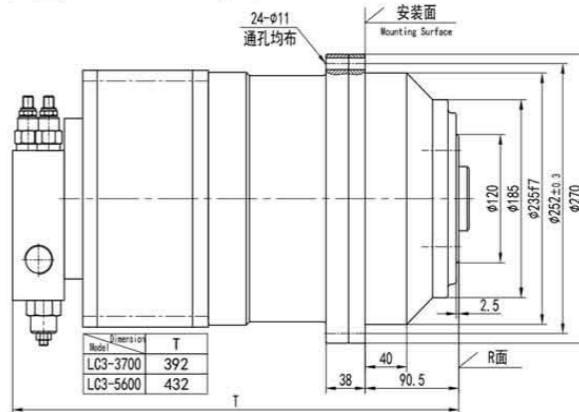
LC3

Jinghan

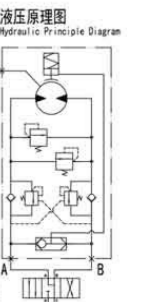
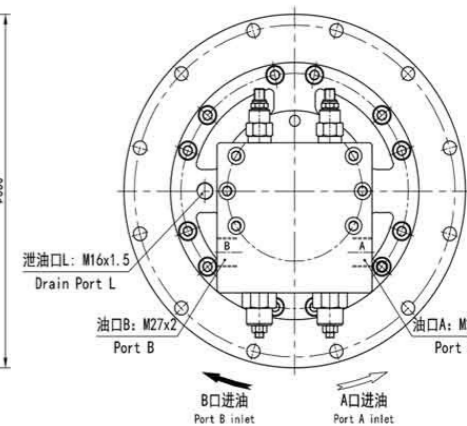
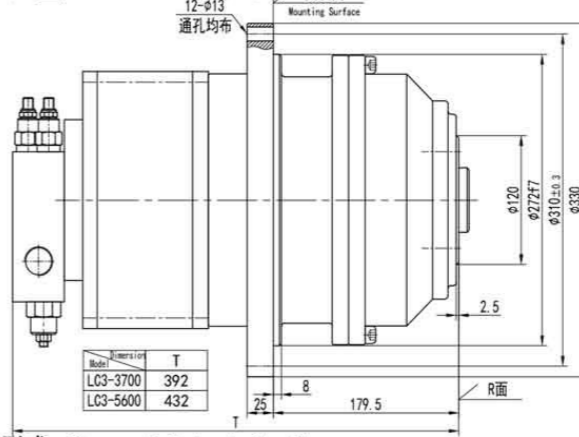
无制动 Without Brake



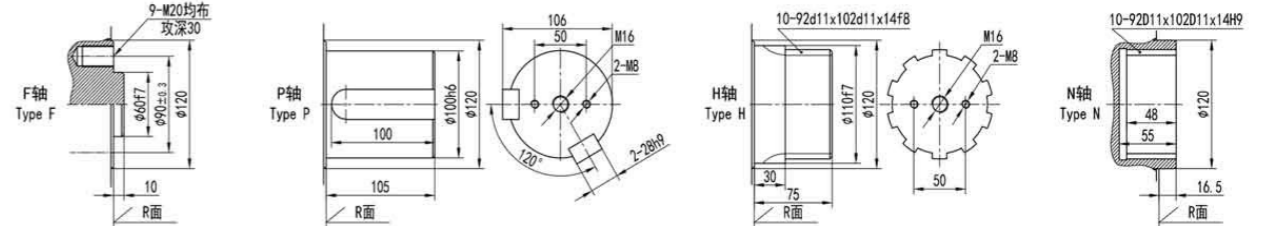
带制动 (Z1型) With Brake (Z1)



带制动 (Z2型) With Brake (Z2)



输出轴形式 Type of Output Shaft



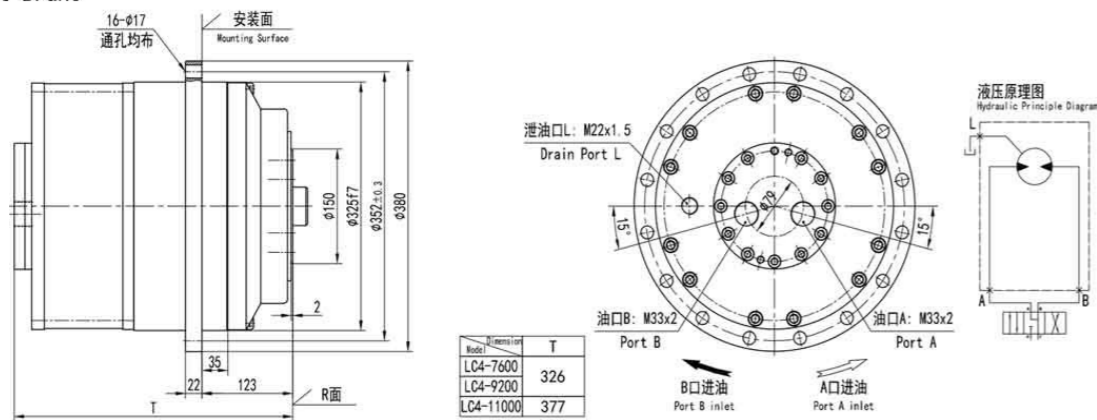
型号 Model	额定扭矩 (Nm) Rated Torque		总排量 Displacement (ml/rev)	转速 Speed (r/min)	供油流量 Oil Supply (L/min)	静制动扭矩 Brake Torque (Nm)	液压马达 Hydraulic Motor	减速比 Gear Ratio	重量 Weight (kg)
	8 MPa	10 MPa							
LC3-3700	4184	5230	3718	20	80	8000	QJM11-0.63	5.6	110
LC3-5600	6299	7874	5600	13	80	10000	QJM12-1.0	5.6	120

注: 可根据客户要求, 调整产品外形尺寸
Note: Contact us if there are any requirements

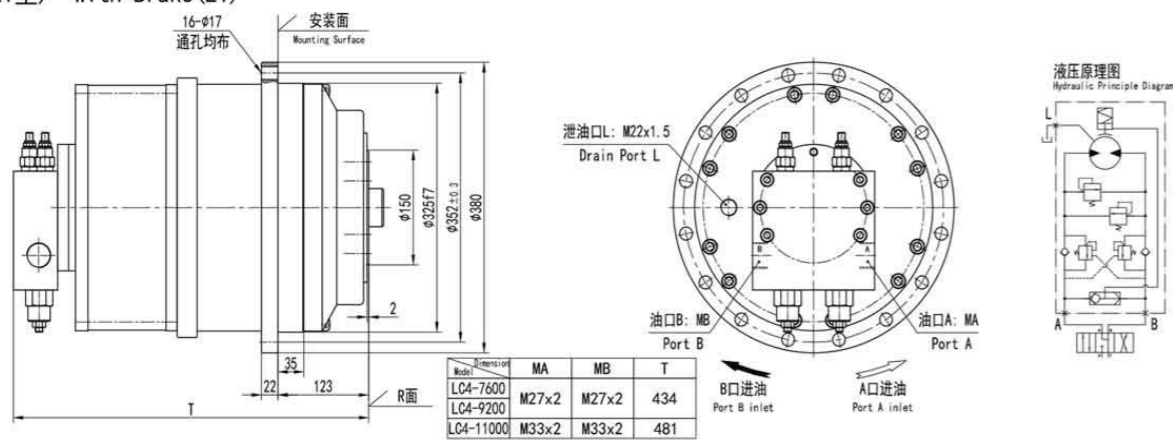
LC4

Jinghan

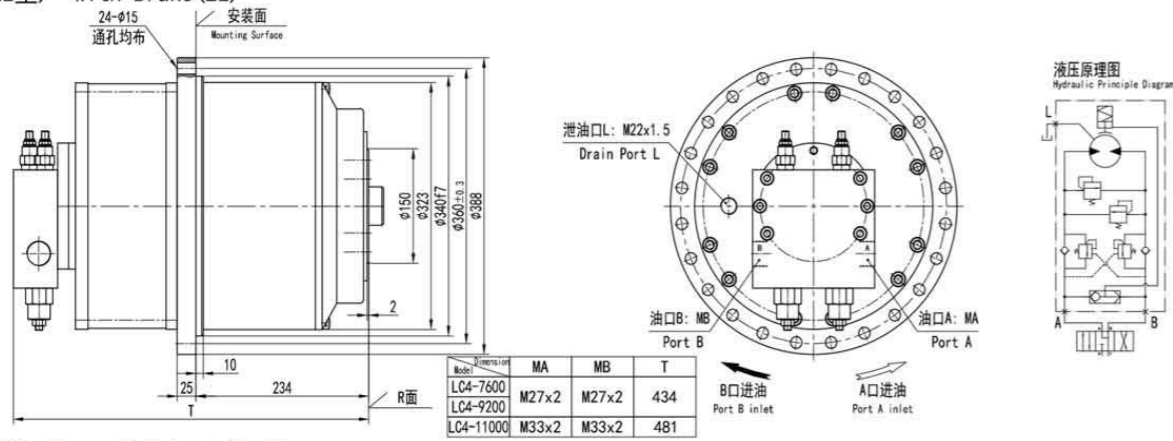
无制动 Without Brake



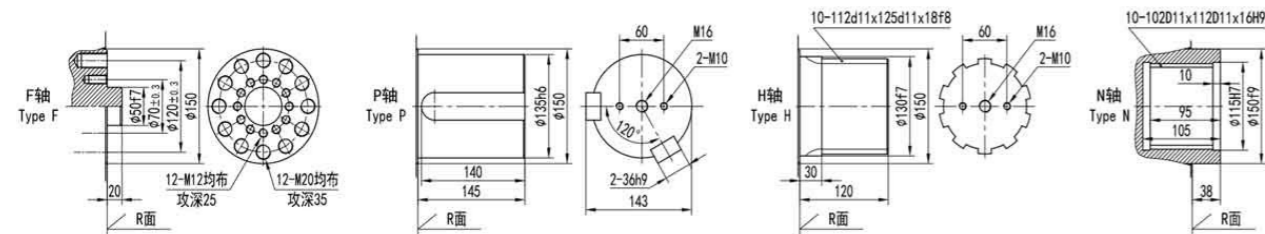
带制动 (Z1型) With Brake (Z1)



带制动 (Z2型) With Brake (Z2)



输出轴形式 Type of Output Shaft



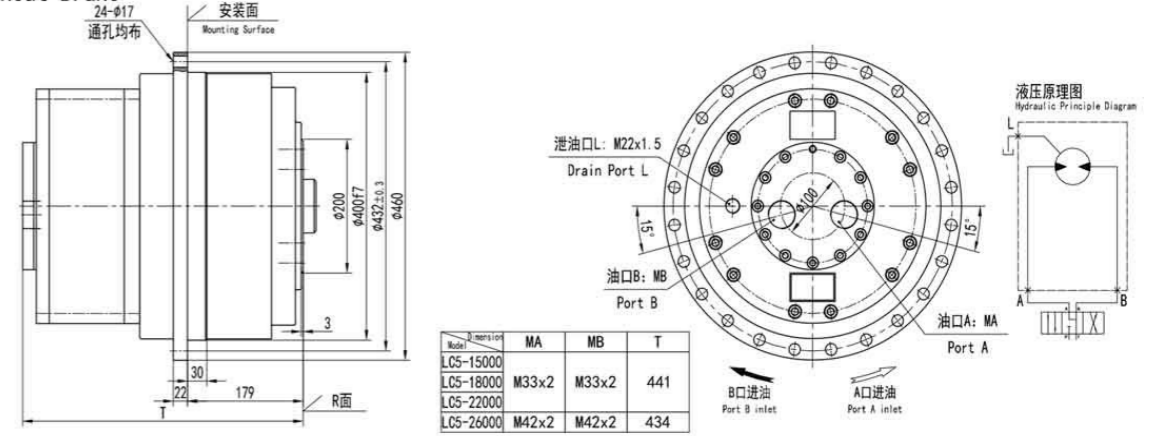
型号 Model	额定扭矩 (Nm) Rated Torque		总排量 Displacement (ml/rev)	转速 Speed (r/min)	供油流量 Oil Supply (L/min)	静制动扭矩 Brake Torque (Nm)	液压马达 Hydraulic Motor	减速比 Gear Ratio	重量 Weight (kg)
	8 MPa	10 MPa							
LC4-7600	8529	10661	7582	10	80	20000	QJM21-1.25	5.6	190
LC4-9200	10393	12991	9240	8	80	20000	QJM21-1.6	5.6	190
LC4-11000	12787	15983	11368	14.5	180	20000	QJM32-2.0	5.6	220

注: 可根据客户要求, 调整产品外形尺寸
Note: Contact us if there are any requirements

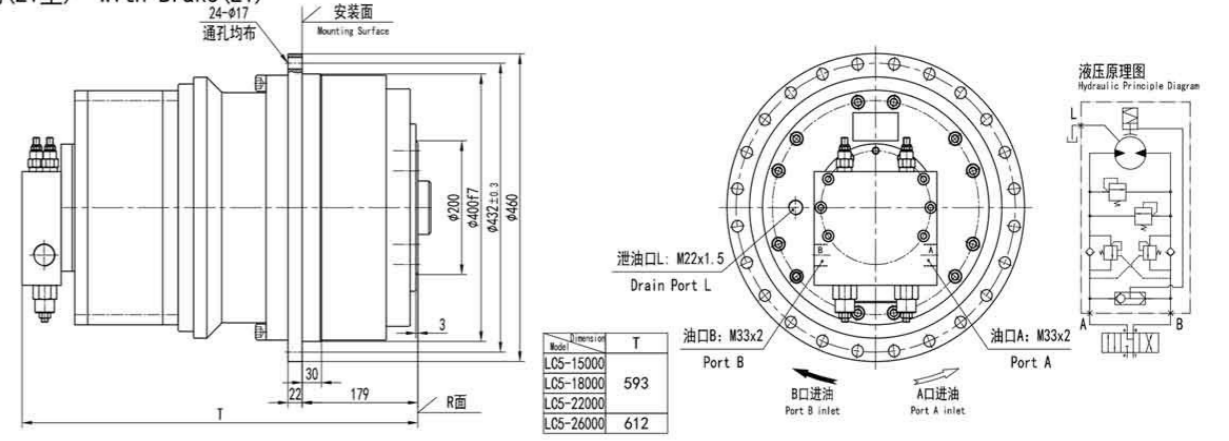
LC5

Jinghan

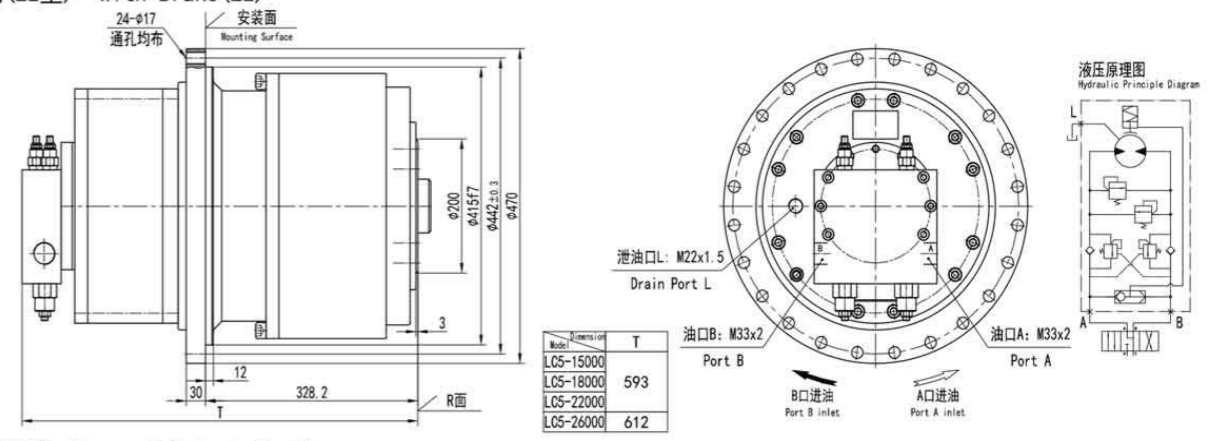
无制动 Without Brake



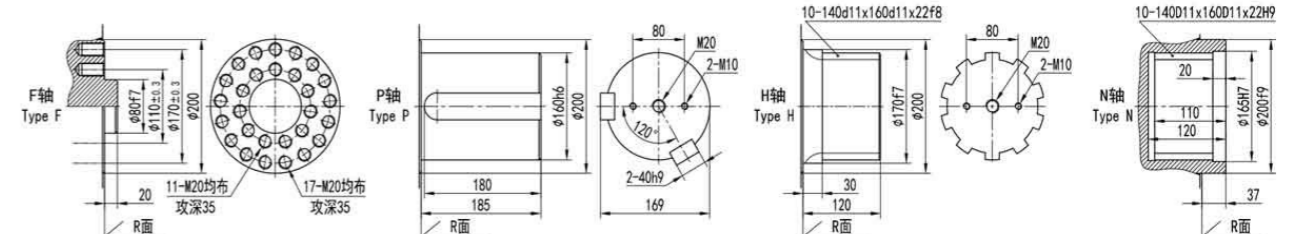
带制动 (Z1型) With Brake (Z1)



带制动 (Z2型) With Brake (Z2)



输出轴形式 Type of Output Shaft



型号 Model	额定扭矩 (Nm) Rated Torque		总排量 Displacement (ml/rev)	转速 Speed (r/min)	供油流量 Oil Supply (L/min)	静制动扭矩 Brake Torque (Nm)	液压马达 Hydraulic Motor	减速比 Gear Ratio	重量 Weight (kg)
	8 MPa	10 MPa							
LC5-15000	17071	21339	15176	11	180	35000	QJM32-2.5	5.6	380
LC5-18000	20786	25983	18480	9	180	40000	QJM32-3.2	5.6	380
LC5-22000	25196	31494	22400	7.5	180	47000	QJM32-4.0	5.6	380
LC5-26000	28975	36219	25760	6.5	180	47000	QJM42-4.5	5.6	400

注: 可根据客户要求, 调整产品外形尺寸
Note: Contact us if there are any requirements